

williams&works

engineers | surveyors | planners

April 14, 2025

Village of Middleville
Craig Stolsonburg
Village Manager
100 Main Street
Middleville, MI 49333

CONTRACT: IRVING ROAD RECONSTRUCTION PHASE I

ADDENDUM No. 2

Notice to All Prospective Bidders:

This Addendum is issued in accordance with INSTRUCTIONS TO BIDDERS, and is hereby incorporated into the Contract Documents. The CONTRACTOR is reminded to appropriately-acknowledge receipt of this Addendum in the BID FORM. *This Addendum forms a part of the Contract Documents and modifies the original Bidding Documents dated March 26, 2025. This Addendum No. 1 consists of two (2) typed page and enclosures. The issuance of the Specification Sections, and the issue of Drawings are listed at the end of this document and are attached to this document.*

Modifications to Specifications:

1. 01 20 00 – Measurement and Payment: (Re-issued)
 - 1.06.A.29- Replace “Measured along the pipe centerline at the surface and paid for by the linear foot installed or replaced of the size and material specified, from the corporation to the ROW. Includes pipe, fittings, connections to the corporation stop, curb stop and existing water service, excavation, backfilling, compaction, and restoration to existing grade. Includes abandonment/removal of existing service to ROW line from abandoned watermain.” With “shall be measured in units as shown in the Bid Form and shall be measured along the centerline of the pipe from the center of the curb box to the end of the pipe. Includes placement of a new copper water service from the curb stop to the building penetration at a designated location utilizing directional drilling or other approved trenchless technology, and includes furnishing and placing all copper piping, fittings, sand backfill, permit fees and any incidental work required for the proper placement of the water services.”

Modifications to Drawings:

2. Sheet 7-10: (Re-issued)
 - Water Main Note 4 – Replace “Each residence shall be provided w/ tap for 1 inch water service including corporation stop, meter chamber including meter installation.” With “Each lot to be provided w/(1) 1” water service, (1) corp stop & curb box between curb & sidewalk.”

Village of Middleville - Irving Road Reconstruction
Addendum No. 2
April 15, 2025
Page 2 of 2

- Insert
7. There are known lead services along the road corridor. All lead services are to be replaced from the main, all the way to the meter. Water service's will be paid for as either "Water Service, Copper, 1 inch (Main to Curb Box)" or "Water Service, Copper, 1 inch (Curb Box to Meter)"

Please contact the project manager with any questions or comments on this addendum.

Respectfully submitted,

Williams & Works

Katie Mendez
Project Manager

Enclosures: 01 20 00 – Measurement and Payment
Sheet 7-10 – Utility Plan and Profile

Cc: All Plan Holders
Alec Belson, Village of Middleville
David Mickevich, PE, Williams & Works
File

PART 1 - GENERAL

1.01 SECTION INCLUDES:

- A. Measurement and payment criteria applicable to the Work.

1.02 AUTHORITY:

- A. Measurement methods delineated in the individual specification sections are intended to complement the criteria of this section.
- B. The ENGINEER will take all measurements and compute quantities accordingly.
- C. Assist by providing necessary equipment, workers, and survey personnel as required.

1.03 UNIT QUANTITIES SPECIFIED:

- A. Quantities and measurements indicated in the Bid Form are for bidding and contract purposes only. Quantities and measurements supplied or placed in the Work and verified by the ENGINEER shall determine payment.
- B. If the actual Work requires more or fewer quantities than those quantities indicated, provide the required quantities at the unit prices contracted.

1.04 MEASUREMENT OF QUANTITIES:

- A. Measurement Devices:
 - 1. Weigh Scales: Inspected, tested and certified.
 - 2. Platform Scales: Of sufficient size and capacity to accommodate the conveying vehicle.
 - 3. Metering Devices: Inspected, tested and certified.
- B. Measurement by Weight: Concrete reinforcing steel, rolled or formed steel or other metal shapes will be measured by handbook weights. Welded assemblies will be measured by handbook weights.
- C. Measurement by Volume: Measured by cubic dimension using mean length, width and height or thickness.
- D. Measurement by Area: Measured by square dimension using mean length and width or radius.
- E. Linear Measurement: Measured by linear dimension, at the item centerline.

1.05 PAYMENT:

- A. Payment Includes: Full compensation for all required labor, products, tools, equipment, plant, transportation, services and incidentals; erection, application or installation of an item of the Work; overhead and profit.
- B. Final payment for Work governed by unit prices will be made on the basis of the actual measurements and quantities accepted by the ENGINEER multiplied by the unit price for Work which is incorporated in or made necessary by the Work.

1.06 MEASUREMENT AND PAYMENT SCHEDULE:

- A. The following schedule outlines the method of measurement and basis of payment to be used on this project. Requirements for materials and methods described under each unit price are included in the specification sections.
 - 1. **Mobilization, Max 5%:** Paid as a lump sum. Payment will be based on the following payment schedule: 50% of bid amount for 5% of original contract amount completed; 75% of bid amount for 10% of original contract amount completed; 100% of bid amount for 25% of original contract amount completed.

2. **Maintenance of Traffic:** Will be measured and paid as a lump sum and includes all necessary signing, flagging, traffic regulators, drums, and barricades to safely maintain traffic and protect the work site during the duration of the project per the requirements provided in the plans and specifications.
3. **Curb and Gutter, Rem:** Will be measured by the linear foot along the base of the curb face or along the flowline of the gutter where marked by the Engineer, regardless of vertical size. Includes saw cutting.
4. **Concrete Driveway and Sidewalk, Rem:** Measured and paid for by the square foot, regardless of depth. All removals shall be to a saw cut edge.
5. **Pavt, Rem:** Measured and paid for by the square yard, regardless of depth. Payment includes all improved street surfaces and driveways, regardless of material, where improved surfaces are called for removal. Gravel surfaces are excluded. All removals shall be to a saw cut edge.
6. **Cold Milling HMA Surface:** Measured and paid for by the square yard. The unit price for cold milling includes the cost of removing, loading, hauling, weighing, and disposing of the cold-milled material, and cleaning the cold-milled pavement.
7. **HMA, 4EL:** Paid for by the ton for the mix specified, compacted and accepted. Measured by tallying load tickets. Submit all load tickets to ENGINEER at time of delivery. Estimated quantities based on 275#/syd/inch.
8. **HMA, 5EL:** Paid for by the ton for the mix specified, compacted and accepted. Measured by tallying load tickets. Submit all load tickets to ENGINEER at time of delivery. Estimated quantities based on 220#/syd/inch.
9. **Aggregate Base, 8 inch:** Measured and paid for by the square yard for the thickness and MDOT specified material, compacted in place, tested and accepted.
10. **Subbase, CIP:** Calculated from the proposed street section and paid for by the cubic yard compacted in place where used and authorized by the ENGINEER. Where existing soils area adequate for subbase (determined by Engineer), payment for subbase will not be made.
11. **Dr Structure, 48 inch Dia:** Counted and paid by each and includes furnishing and installing the structure, grade rings, casting, covers and all other accessories as specified and detailed. Furnishing, adjusting and finishing of castings on new storm manholes, is considered included in the cost of the storm manhole, and shall not be paid for separately.
12. **Storm Sewer, C76 CI III, 12 inch:** Measured horizontally on the surface along the pipe centerline from center to center of manholes and paid for the linear foot by the pipe size including: excavation, bedding, backfill, compaction, and all related work.
13. **Culv End Section, Conc, 12 inch:** The completed work will be paid for by each and will include all materials, equipment and labor required to complete this work.
14. **Abandon and Fill Underground Utilities:** Measured and paid for by the length of original utility. Includes the cost of cutting the existing water main, providing and placing the required plug.
15. **16. 17. Water Main, DI, ___ inch:** Measured and paid for by the linear foot of water main placed from center of fitting to center of fitting. Includes laying pipe of the specified material and class at the grade shown on the plans, backfilling, compaction, and restoration to existing grade as shown on the plans.
18. **19. 20. Valve and Box, ___ inch:** Paid for each provided and installed, including restrained fittings, gaskets, bolts and nuts, and any adjustment needed.
21. **Reducer, 12 inch x 8 inch:** Paid for each provided and installed, including restrained fittings, gaskets, bolts and nuts, and any adjustment needed.
22. **Tee, 12 inch x 12 inch x 6 inch:** Paid for each provided and installed, including restrained fittings, gaskets, bolts and nuts.
23. **Tee, 12 inch x 12 inch x 12 inch:** Paid for each provided and installed, including restrained fittings, gaskets, bolts and nuts.
24. **Bend, 11 Degree, 12 inch:** Paid for each provided and installed, including restrained fittings, gaskets, bolts and nuts, and any adjustment needed.
25. **Bend, 22 Degree, 6 inch:** Paid for each provided and installed, including restrained fittings, gaskets, bolts and nuts, and any adjustment needed.
26. **Bend, 22 Degree, 12 inch:** Paid for each provided and installed, including restrained fittings, gaskets, bolts and nuts, and any adjustment needed.
27. **Water Corporation Stop:** Measured and paid for by each corporation stop provided for each water service.
28. **Water Service, Copper, 1 inch (Main to Curb Box):** Measured along the pipe centerline at the surface and paid for by the linear foot installed or replaced of the size and material specified, from the corporation to the ROW. Includes pipe, fittings, connections to the corporation stop, curb stop and existing water service, excavation, backfilling, compaction, and restoration to existing grade. Includes abandonment/removal of existing service to ROW line from abandoned watermain.
29. **Water Service, Copper, 1 inch (Curb box to Meter):** shall be measured in units as shown in the Bid Form and shall be measured along the centerline of the pipe from the center of the curb box to the end of the pipe. Includes placement of a new copper water service from the curb stop to the building penetration at a

designated location utilizing directional drilling or other approved trenchless technology, and includes furnishing and placing all copper piping, fittings, sand backfill, permit fees and any incidental work required for the proper placement of the water services.

30. **Connect to Existing Water Main, 6 inch:** Counted and paid for each connection made to an existing watermain. Includes all fittings, materials, equipment, and labor needed to complete the work. Excludes valves and boxes, which are paid separately.
31. **Connect to Existing Water Main, 8 inch:** Counted and paid for each connection made to an existing watermain. Includes all fittings, materials, equipment, and labor needed to complete the work. Excludes valves and boxes, which are paid separately.
32. **Connect to Existing Water Main, 12 inch:** Counted and paid for each connection made to an existing watermain. Includes all fittings, materials, equipment, and labor needed to complete the work. Excludes valves and boxes, which are paid separately.
33. **Hydrant Assembly, 6 inch:** Includes the cost of providing and installing the hydrant, hydrant valve, valve box, and all pieces between the water main and hydrant, including the tee, coarse gravel and concrete base, fire hydrant marker at the locations shown on the plans in a ready-for-use condition unless noted otherwise.
34. **Machine Grading:** Measured along street centerline and paid for by the 100 foot station. This item shall include rough grading, shaping, fine grading, removal of culverts, earth excavation, embankment, and all earthwork necessary to construct the proposed street section from right-of-way line to right-of-way line. Includes any necessary clearing and grubbing including removal and disposal of all brush and vegetation less than 6" in diameter regardless of species.
35. **Curb and Gutter, Conc, Det F4:** Will be measured in place by length in linear feet, along the joint of the curbing with the pavement, with not deduct in length for catch basins, inlet castings, or dub-down drive approaches.
36. **Sidewalk, Nonreinf Conc, 4 inch:** Measured in place by the area placed and paid for by the square foot including: shaping and compacting base; placing form work; placing and finishing concrete; placing expansion joints; providing and placing curing compound.
37. **Driveway, Nonreinf Conc, 6 inch:** Measured and paid for by the square yard for the depth specified for concrete drives poured in place according to the specifications, plan details and notes. Includes all form work, materials, labor, and equipment to perform the work.
38. **Sidewalk Ramp, Conc, 6 inch:** Measured in place by the area placed and paid for by the square foot including: shaping and compacting base; placing form work; placing and finishing concrete; placing expansion joints; providing and placing curing compound.
39. **Detectable Warning Surface:** Measured and paid for by the linear foot.
40. **Cured In-Place Manhole Lining, 48 inch:** Measured and paid for by the vertical foot for the diameter placed measured between the lowest invert and the finished rim grade and rounded to the nearest whole foot. Payment includes all preparation work needed to install liner.
41. **42. Cured In-Place Pipe Liner, ___ inch:** measured horizontally on the surface along the pipe centerline from center to center of manholes and paid for the linear foot by the pipe size including: bypass pumping, liner installation final television inspection, and all related work.
43. **Heavy Cleaning and Video of Underground Piping:** measured horizontally on the surface along the pipe centerline from center to center of manholes and paid for the linear foot by the pipe size including: by-pass pumping, cleaning, pre-CIPP inversion television inspection of the sewer to be lined, removal of all roots and mineral deposits, intruding gaskets/sealing rings and other obstructions.
44. **Trenching:** will be measured and paid for by the linear foot (LF), including excavation, backfilling, and compaction as required.
45. **Lead Water Service Allowance -** There are suspected lead/galvanized water services on this block. Payment will be made per the submitted invoice from a licensed plumber, based on the work completed and approved. This is an allowance established to pay for all materials, labor, and equipment, including the services of a licensed plumber, required to:

Replace the water service inside and within 3 feet of a building and connect the service to the new water service line placed from the new Water Meter Chamber. Restoration of all slope and landscaping disturbances, and coordination with the resident to complete the work.

Assist property owners and building maintenance staff during water service interruptions. This may be caused during the installation of a new water main and may result in the accumulation of sediment in screens of faucets and private plumbing lines. This work may include shutting off service within a building to prevent draining of the internal water distribution system, cleaning of internal plumbing systems and screens, meeting attendance and other work as approved by the Engineer.

SECTION 01 20 00

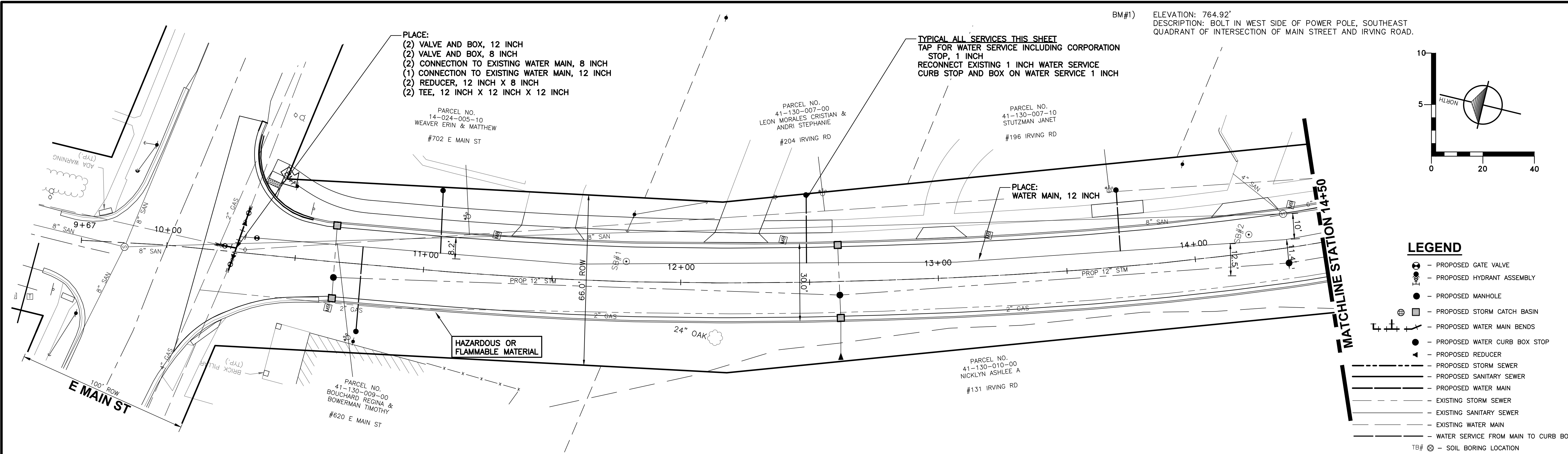
- 46. **Concrete Flume:** The work completed will be paid for by each and will include all materials and equipment and labor required to complete this work.
- 47. **Slope Restoration, Non-Freeway, Type E:** paid for as a lump sum. includes installing Topsoil Surface; Fertilizer, Chemical Nutrient; seeding mixture; and Bonded Fiber Matrix.
- 48. **Post, Mailbox:** The completed work shall be paid for by each and shall include moving existing mailbox supports and mailboxes, maintain serviceability during construction, and installation of a new post at the permanent location after construction is complete.
- 49. **Pavt Mrkg, Waterborne, 4 inch, White:** Measured and paid for by the length of the pavement marking, in place, along the centerline.
- 50. **Pavt Mrkg, Waterborne, 4 inch, Yellow:** Measured and paid for by the length of the pavement marking, in place, along the centerline.
- 51. **Pavt Mrkg, 24 inch, Stop Bar, Ovly Cold Plastic:** Measured and paid for by the length of the pavement marking, in place, along the centerline.
- 52. **Hydrant Rem:** Paid for by each hydrant assembly removed as shown on plans.

PART 2 - PRODUCTS

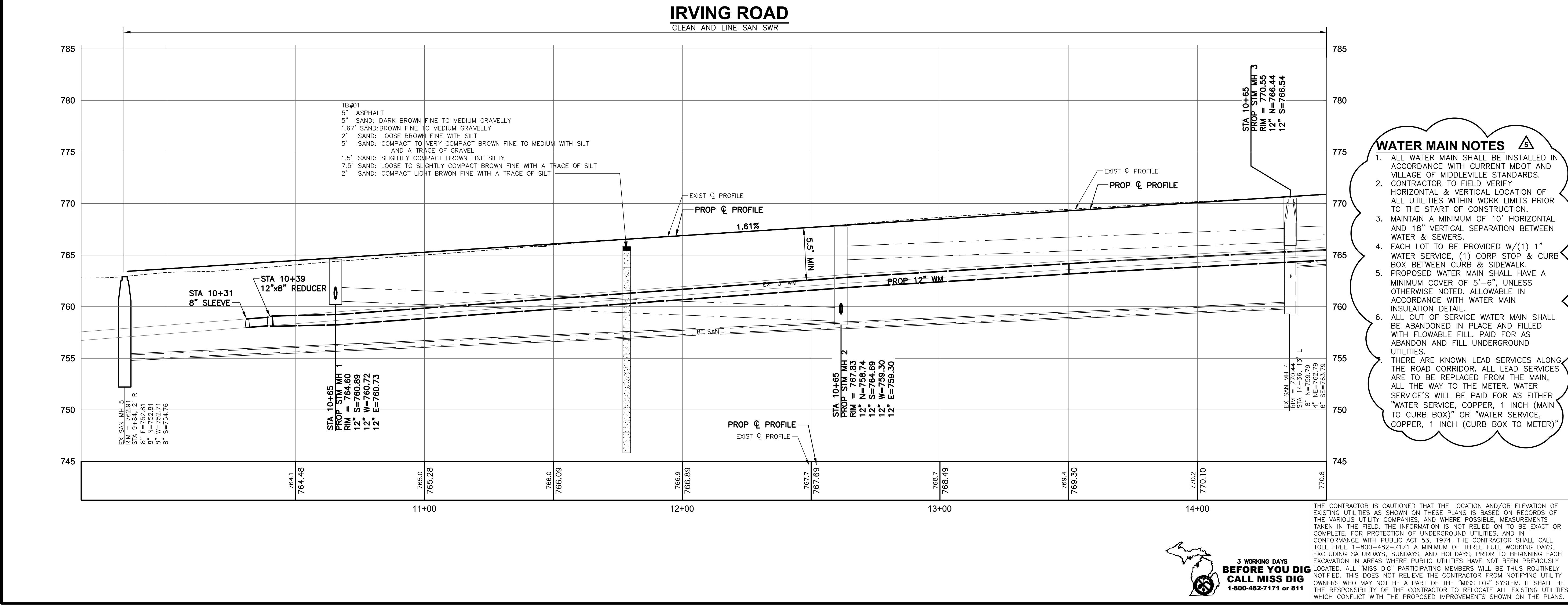
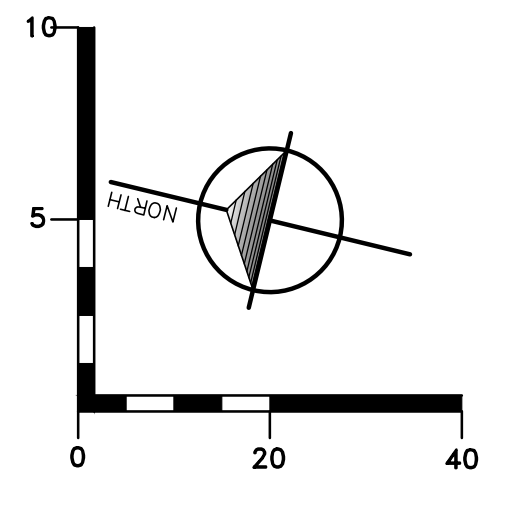
Not used.

PART 3 - EXECUTION

Not used.



BM#1) ELEVATION: 764.92'
 DESCRIPTION: BOLT IN WEST SIDE OF POWER POLE, SOUTHEAST QUADRANT OF INTERSECTION OF MAIN STREET AND IRVING ROAD.



williams&works
 engineers surveyors planners
 816.224.1500 phone | http://williamsworks.com
 549 Ottawa Ave NW | Grand Rapids, MI 49503

VILLAGE OF MIDDLEVILLE
 BARRY COUNTY, MICHIGAN
 IRVING ROAD RECONSTRUCTION
 UTILITY PLAN AND PROFILE: P.O.B TO STA. 14+50

NO.	ISSUED FOR	DATE
1.	OWNER REVIEW	1/6/24
2.	ACT 399 PERMIT	2/21/25
3.	CONTRACTOR BID	3/27/25
4.	ADDENDUM NO. 1	4/8/2025
5.	ADDENDUM NO. 2	4/14/25

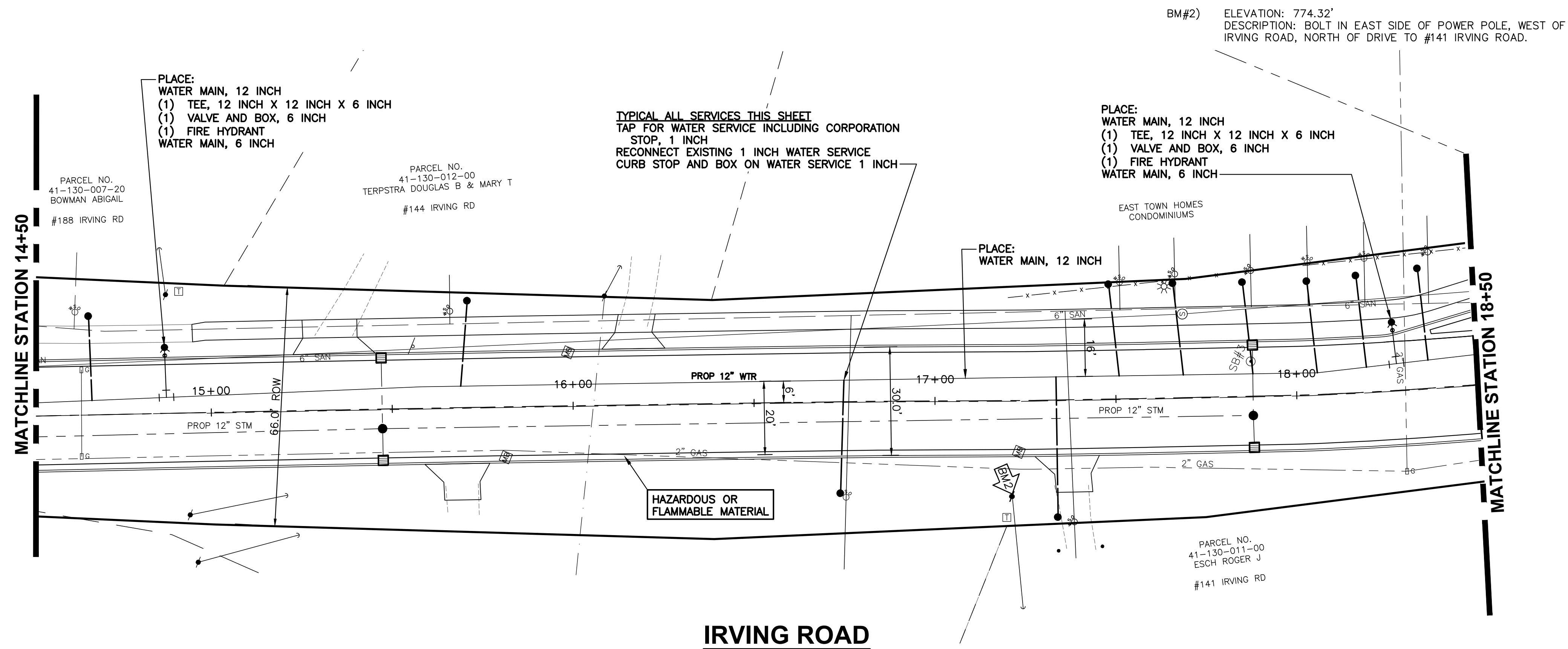
DESIGNED BY	DATE	DRAWN BY	DATE	CHECKED BY	DATE
K. MENDEZ	2/2025	K. MENDEZ	2/2025	D. MICKEVICH	3/2025

PROJECT: 224100
 FILE: Pit-Plan...San

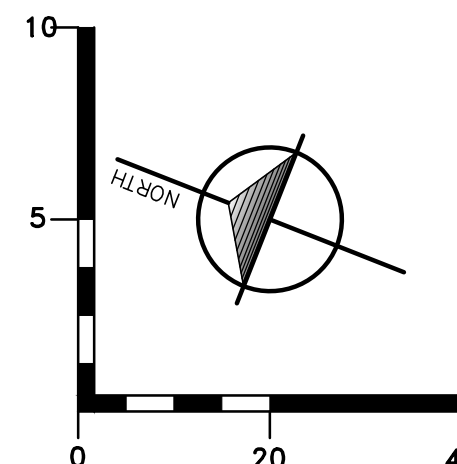
7
 SHEET NO.

3 WORKING DAYS BEFORE YOU DIG CALL MISS DIG 1-800-482-7171 or 811

THE CONTRACTOR IS CAUTIONED THAT THE LOCATION AND/OR ELEVATION OF EXISTING UTILITIES AS SHOWN ON THESE PLANS IS BASED ON RECORDS OF THE VARIOUS UTILITY COMPANIES, AND WHERE POSSIBLE, MEASUREMENTS TAKEN IN THE FIELD. THE INFORMATION IS NOT RELIED ON TO BE EXACT OR COMPLETE. FOR PROTECTION OF UNDERGROUND UTILITIES, AND IN CONFORMANCE WITH PUBLIC ACT 53, 1974, THE CONTRACTOR SHALL CALL TOLL FREE 1-800-482-7171 A MINIMUM OF THREE FULL WORKING DAYS, EXCLUDING SATURDAYS, SUNDAYS, AND HOLIDAYS, PRIOR TO BEGINNING EACH EXCAVATION IN AREAS WHERE PUBLIC UTILITIES HAVE NOT BEEN PREVIOUSLY LOCATED. ALL "MISS DIG" PARTICIPATING MEMBERS WILL BE THUS ROUTINELY NOTIFIED. THIS DOES NOT RELIEVE THE CONTRACTOR FROM NOTIFYING UTILITY OWNERS WHO MAY NOT BE A PART OF THE "MISS DIG" SYSTEM. IT SHALL BE THE RESPONSIBILITY OF THE CONTRACTOR TO RELOCATE ALL EXISTING UTILITIES WHICH CONFLICT WITH THE PROPOSED IMPROVEMENTS SHOWN ON THE PLANS.



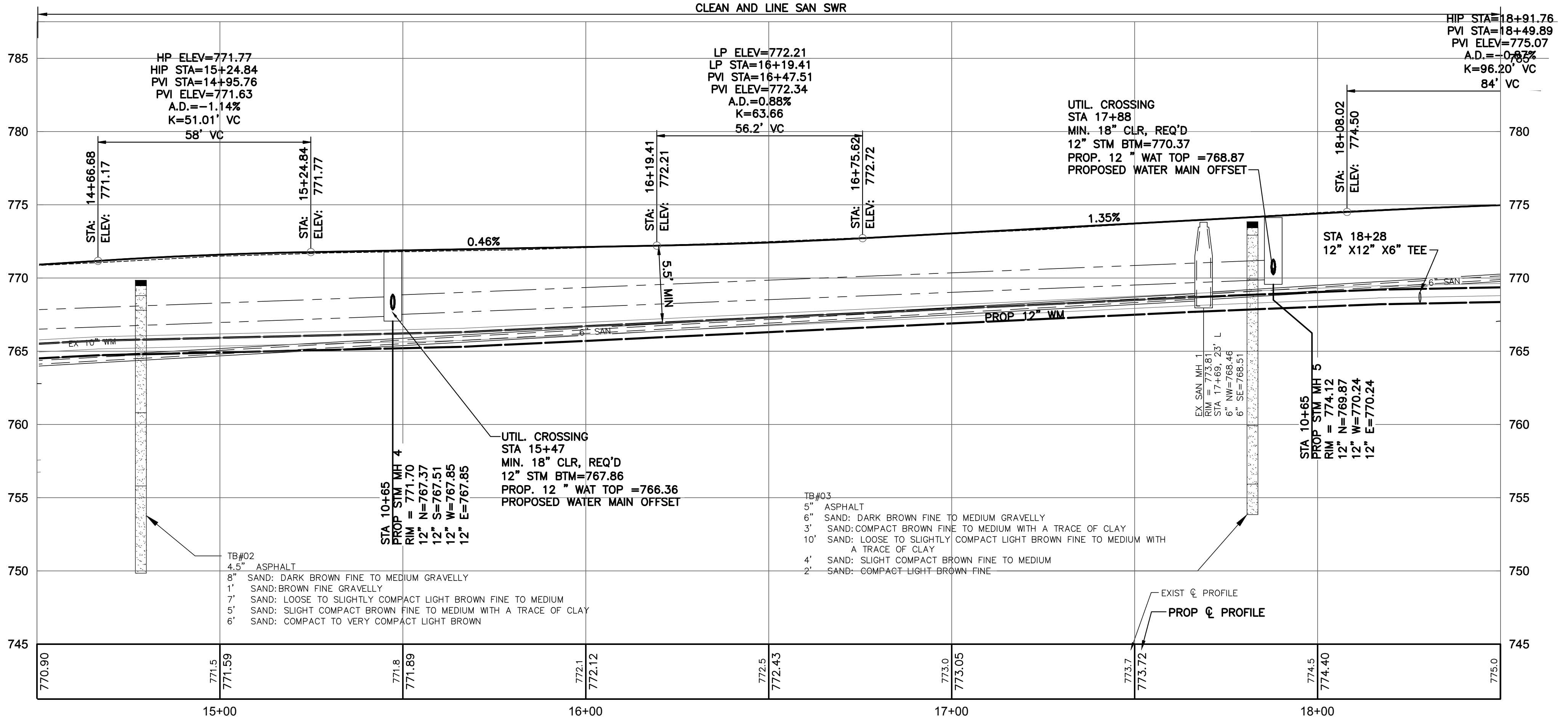
BM#2) ELEVATION: 774.32'
DESCRIPTION: BOLT IN EAST SIDE OF POWER POLE, WEST OF IRVING ROAD, NORTH OF DRIVE TO #141 IRVING ROAD.



LEGEND

- PROPOSED GATE VALVE
- PROPOSED HYDRANT ASSEMBLY
- PROPOSED MANHOLE
- PROPOSED STORM CATCH BASIN
- PROPOSED WATER MAIN BENDS
- PROPOSED WATER CURB BOX STOP
- PROPOSED REDUCER
- PROPOSED STORM SEWER
- PROPOSED SANITARY SEWER
- EXISTING STORM SEWER
- EXISTING SANITARY SEWER
- EXISTING WATER MAIN
- WATER SERVICE FROM MAIN TO CURB BOX
- SOIL BORING LOCATION

IRVING ROAD



WATER MAIN NOTES

- ALL WATER MAIN SHALL BE INSTALLED IN ACCORDANCE WITH CURRENT MDT AND VILLAGE OF MIDDLEVILLE STANDARDS.
- CONTRACTOR TO FIELD VERIFY HORIZONTAL & VERTICAL LOCATION OF ALL UTILITIES WITHIN WORK LIMITS PRIOR TO THE START OF CONSTRUCTION.
- MAINTAIN A MINIMUM OF 10' HORIZONTAL AND 18" VERTICAL SEPARATION BETWEEN WATER & SEWERS.
- EACH LOT TO BE PROVIDED W/(1) 1" WATER SERVICE, (1) CORP STOP & CURB BOX BETWEEN CURB & SIDEWALK.
- PROPOSED WATER MAIN SHALL HAVE A MINIMUM COVER OF 5'-6", UNLESS OTHERWISE NOTED. ALLOWABLE INSULATION DETAIL.
- ALL OUT OF SERVICE WATER MAIN SHALL BE ABANDONED IN PLACE AND FILLED WITH FLOWABLE FILL, PAID FOR AS ABANDON AND FILL UNDERGROUND UTILITIES.
- THERE ARE KNOWN LEAD SERVICES ALONG THE ROAD CORRIDOR. ALL LEAD SERVICES ARE TO BE REPLACED FROM THE MAIN, ALL THE WAY TO THE METER. WATER SERVICE'S WILL BE PAID FOR AS EITHER "WATER SERVICE, COPPER, 1 INCH (MAIN TO CURB BOX)" OR "WATER SERVICE, COPPER, 1 INCH (CURB BOX TO METER)".

THE CONTRACTOR IS CAUTIONED THAT THE LOCATION AND/OR ELEVATION OF EXISTING UTILITIES AS SHOWN ON THESE PLANS IS BASED ON RECORDS OF THE VARIOUS UTILITY COMPANIES, AND WHERE POSSIBLE, MEASUREMENTS TAKEN IN THE FIELD. THE INFORMATION IS NOT RELIED ON TO BE EXACT OR COMPLETE. FOR PROTECTION OF UNDERGROUND UTILITIES, AND IN CONFORMANCE WITH PUBLIC ACT 53, 1974, THE CONTRACTOR SHALL CALL TOLL FREE 1-800-482-7171 A MINIMUM OF THREE FULL WORKING DAYS, EXCLUDING SATURDAYS, SUNDAYS, AND HOLIDAYS, PRIOR TO BEGINNING EACH EXCAVATION IN AREAS WHERE PUBLIC UTILITIES HAVE NOT BEEN PREVIOUSLY LOCATED. ALL "MISS DIG" PARTICIPATING MEMBERS WILL BE THUS ROUTINELY NOTIFIED. THIS DOES NOT RELIEVE THE CONTRACTOR FROM NOTIFYING UTILITY OWNERS WHO MAY NOT BE A PART OF THE "MISS DIG" SYSTEM. IT SHALL BE THE RESPONSIBILITY OF THE CONTRACTOR TO RELOCATE ALL EXISTING UTILITIES WHICH CONFLICT WITH THE PROPOSED IMPROVEMENTS SHOWN ON THE PLANS.



816.224.1500 phone
549 Ottawa Ave NW
Grand Rapids, MI 49503

NO.	DATE	ISSUED FOR	BY
1.	1/6/24	OWNER REVIEW	KM
2.	2/27/25	ACT 399 PERMIT	KM
3.	3/27/25	CONTRACTOR BID	KM
4.	4/8/2025	ADDENDUM NO. 1	KM
5.	4/14/25	ADDENDUM NO. 2	KM

VILLAGE OF MIDDLEVILLE
BARRY COUNTY, MICHIGAN
IRVING ROAD RECONSTRUCTION

UTILITY PLAN AND PROFILE: STA. 14+50 TO STA. 18+50

DESIGNED BY	DATE	DRAWN BY	DATE	CHECKED BY	DATE
K. MENDEZ	2/2025	K. MENDEZ	2/2025	D. MCKEIVICH	3/2025

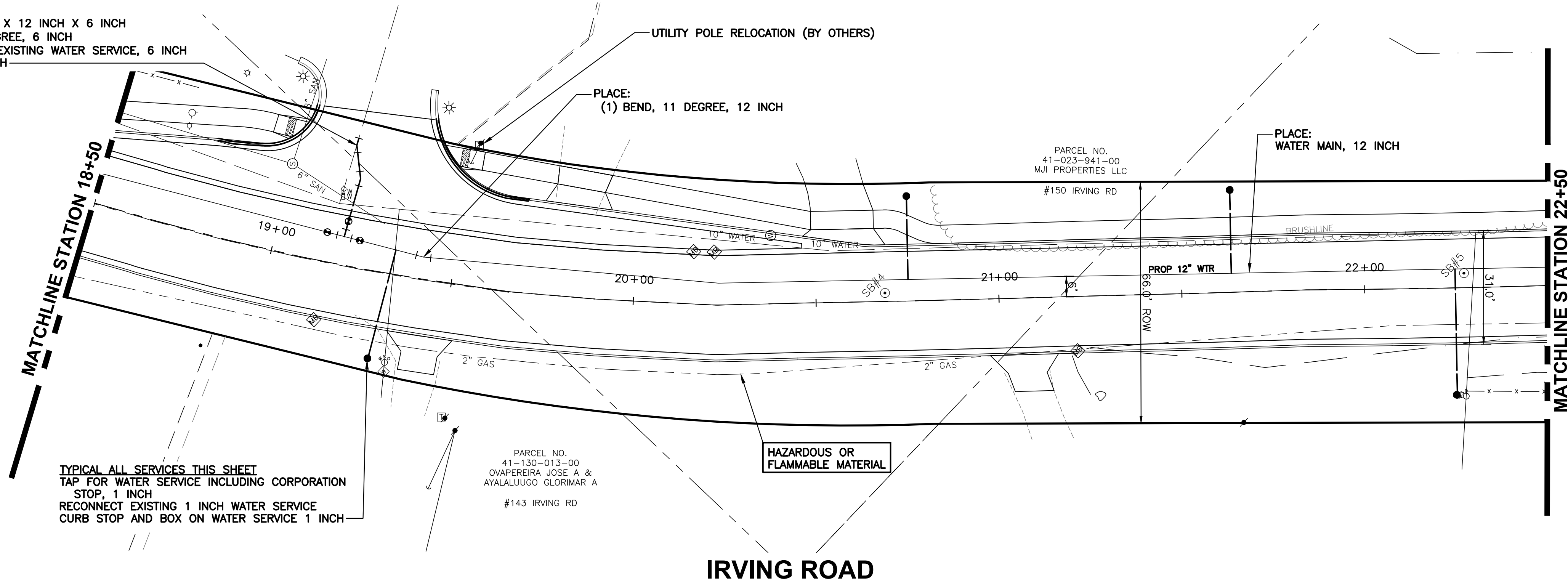
PROJECT: Pit-Plan...San
FILE: 224100

8

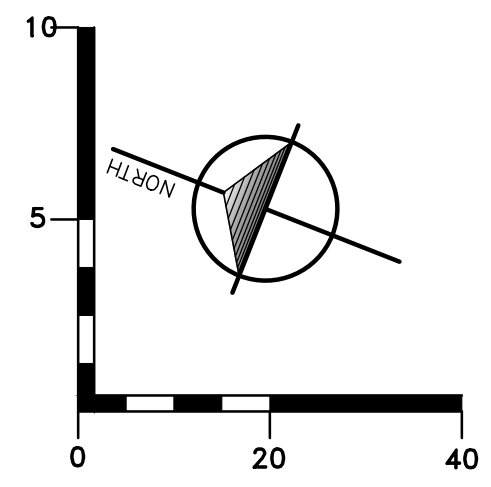
SHEET NO.

Apr 14, 2025 - 3:46pm C:\Users\jmcvick\OneDrive\Local\Temp\jmcvick\172803\17-25\17-25-001.dwg XREF: [dwg] [cpl] [224100-001.dwg] B:\MINDIG

- PLACE:
 (1) TEE, 12 INCH X 12 INCH X 6 INCH
 (2) BEND, 11 DEGREE, 6 INCH
 (1) CONNECT TO EXISTING WATER SERVICE, 6 INCH
 WATER MAIN, 6 INCH

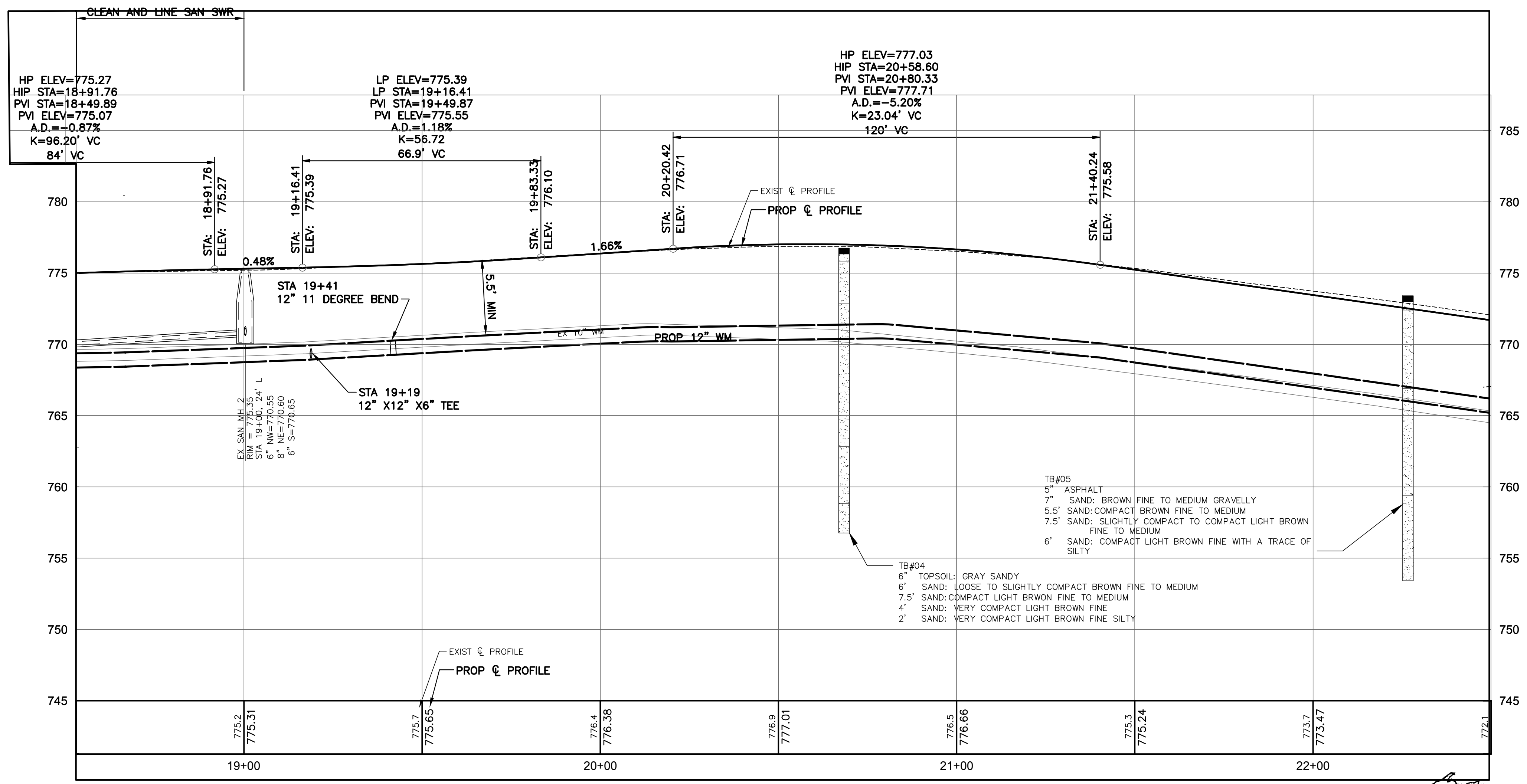


TYPICAL ALL SERVICES THIS SHEET
 TAP FOR WATER SERVICE INCLUDING CORPORATION
 STOP: 1 INCH
 RECONNECT EXISTING 1 INCH WATER SERVICE
 CURB STOP AND BOX ON WATER SERVICE 1 INCH



LEGEND

- ⊗ - PROPOSED GATE VALVE
- ⊕ - PROPOSED HYDRANT ASSEMBLY
- - PROPOSED MANHOLE
- ⊞ - PROPOSED STORM CATCH BASIN
- ⊞ - PROPOSED WATER MAIN BENDS
- - PROPOSED WATER CURB BOX STOP
- ▲ - PROPOSED REDUCER
- - PROPOSED STORM SEWER
- - PROPOSED SANITARY SEWER
- - PROPOSED WATER MAIN
- - EXISTING STORM SEWER
- - EXISTING SANITARY SEWER
- - EXISTING WATER MAIN
- - WATER SERVICE FROM MAIN TO CURB BOX
- TB# ⊗ - SOIL BORING LOCATION



WATER MAIN NOTES

- ALL WATER MAIN SHALL BE INSTALLED IN ACCORDANCE WITH CURRENT MDT AND VILLAGE OF MIDDLEVILLE STANDARDS.
- CONTRACTOR TO FIELD VERIFY HORIZONTAL & VERTICAL LOCATION OF ALL UTILITIES WITHIN WORK LIMITS PRIOR TO THE START OF CONSTRUCTION.
- MAINTAIN A MINIMUM OF 10' HORIZONTAL AND 18" VERTICAL SEPARATION BETWEEN WATER & SEWERS.
- EACH LOT TO BE PROVIDED W/ (1) 1" WATER SERVICE, (1) CORP STOP & CURB BOX BETWEEN CURB & SIDEWALK.
- PROPOSED WATER MAIN SHALL HAVE A MINIMUM COVER OF 5'-6", UNLESS OTHERWISE NOTED. ALLOWABLE IN ACCORDANCE WITH WATER MAIN INSULATION DETAIL.
- ALL OUT OF SERVICE WATER MAIN SHALL BE ABANDONED IN PLACE AND FILLED WITH FLOWABLE FILL. PAID FOR AS ABANDON AND FILL UNDERGROUND UTILITIES.
- THERE ARE KNOWN LEAD SERVICES ALONG THE ROAD CORRIDOR. ALL LEAD SERVICES ARE TO BE REPLACED FROM THE MAIN, ALL THE WAY TO THE METER. WATER SERVICE'S WILL BE PAID FOR AS EITHER "WATER SERVICE, COPPER, 1 INCH (MAIN TO CURB BOX)" OR "WATER SERVICE, COPPER, 1 INCH (CURB BOX TO METER)"

THE CONTRACTOR IS CAUTIONED THAT THE LOCATION AND/OR ELEVATION OF EXISTING UTILITIES AS SHOWN ON THESE PLANS IS BASED ON RECORDS OF THE VARIOUS UTILITY COMPANIES, AND WHERE POSSIBLE, MEASUREMENTS TAKEN IN THE FIELD. THE INFORMATION IS NOT RELIED ON TO BE EXACT OR COMPLETE. FOR PROTECTION OF UNDERGROUND UTILITIES, AND IN CONFORMANCE WITH PUBLIC ACT 53, 1974, THE CONTRACTOR SHALL CALL TOLL FREE 1-800-482-7171 A MINIMUM OF THREE FULL WORKING DAYS, EXCLUDING SATURDAYS, SUNDAYS, AND HOLIDAYS, PRIOR TO BEGINNING EACH EXCAVATION IN AREAS WHERE PUBLIC UTILITIES HAVE NOT BEEN PREVIOUSLY LOCATED. ALL "MISS DIG" PARTICIPATING MEMBERS WILL BE THUS ROUTINELY NOTIFIED. THIS DOES NOT RELIEVE THE CONTRACTOR FROM NOTIFYING UTILITY OWNERS WHO MAY NOT BE A PART OF THE "MISS DIG" SYSTEM. IT SHALL BE THE RESPONSIBILITY OF THE CONTRACTOR TO RELOCATE ALL EXISTING UTILITIES WHICH CONFLICT WITH THE PROPOSED IMPROVEMENTS SHOWN ON THE PLANS.

**3 WORKING DAYS
 BEFORE YOU DIG
 CALL MISS DIG
 1-800-482-7171 or 811**

williams&works
 engineers | surveyors | planners
 616.224.1500 phone | http://williamsworks.com
 549 Ottawa Ave NW | Grand Rapids, MI 49503

VILLAGE OF MIDDLEVILLE
 BARRY COUNTY, MICHIGAN
 IRVING ROAD RECONSTRUCTION
 UTILITY PLAN AND PROFILE: STA. 18+50 TO STA. 22+50

NO.	ISSUED FOR	DATE
1.	OWNER REVIEW	1/6/24
2.	ACT 399 PERMIT	2/27/25
3.	CONTRACTOR BID	3/27/25
4.	ADDENDUM NO. 1	4/8/2025
5.	ADDENDUM NO. 2	4/14/25

DESIGNED BY	DATE	DRAWN BY	DATE	CHECKED BY	DATE
K. MENDEZ	2/2025	K. MENDEZ	2/2025	D. MCKEVICH	3/2025

PROJECT: 224100
 FILE: Pit-Plan...San

9
 SHEET NO.

Apr 14, 2025 - 3:40pm C:\Users\jmenendez\OneDrive\Local\Temp\jmenendez\172631\PI-Plan...San\XREFS - [Draw] [Edit] [2/21/2025] - BAW-jfd
 BAW0002



NO.	ISSUED FOR	DATE
1.	OWNER REVIEW	1/6/24
2.	ACT 399 PERMIT	2/27/25
3.	CONTRACTOR BID	3/27/25
4.	ADDENDUM NO. 1	4/8/2025
5.	ADDENDUM NO. 2	4/14/25

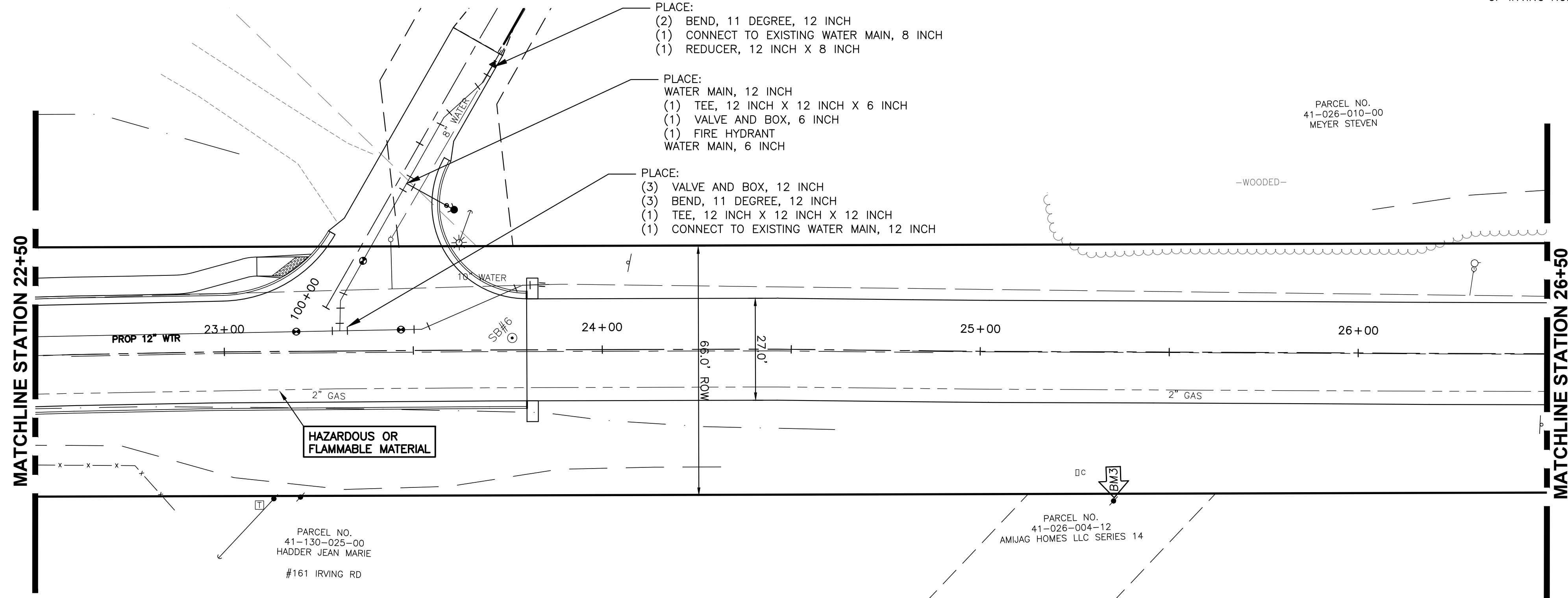
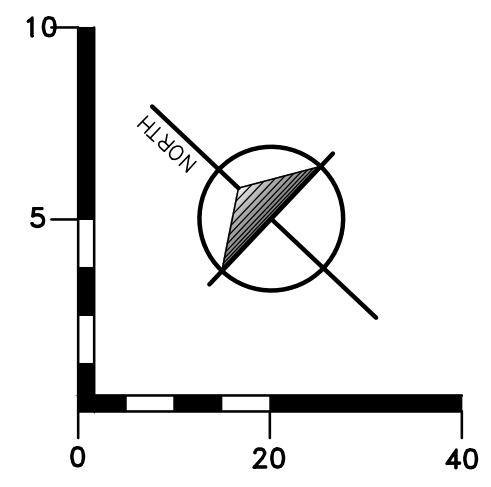
VILLAGE OF MIDDLEVILLE
BARRY COUNTY, MICHIGAN
IRVING ROAD RECONSTRUCTION
UTILITY PLAN AND PROFILE: STA. 22+50 TO STA. 26+50

DESIGNED BY	DATE	DRAWN BY	DATE	CHECKED BY	DATE
K. MENDEZ	2/2025	K. MENDEZ	2/2025	D. MCKEVICH	3/2025

PROJECT: 224100
FILE: Pit-Plan...San

10
SHEET NO.

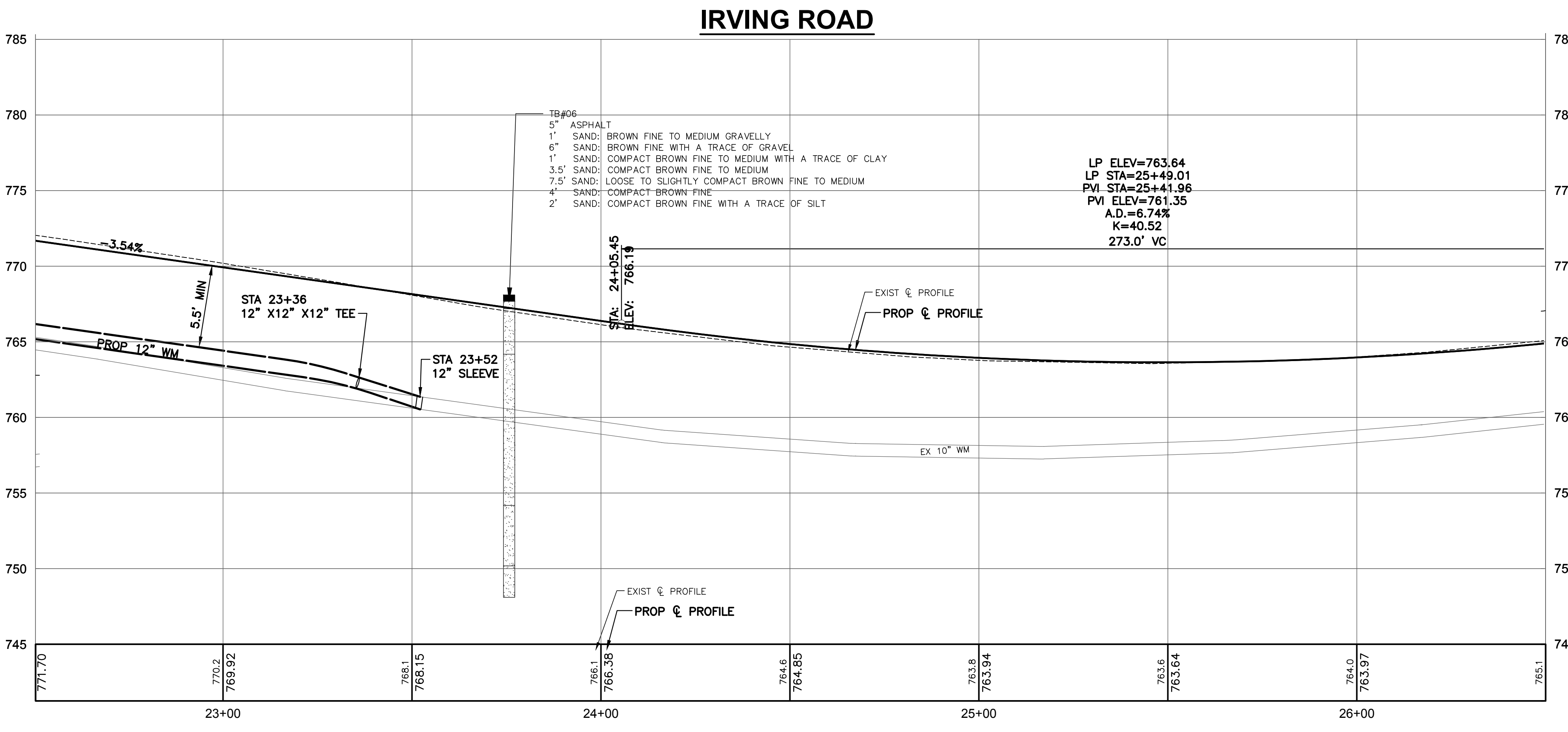
BM#3) ELEVATION: 764.22'
DESCRIPTION: BOLT IN EAST SIDE OF POWER POLE #767/1, WEST OF IRVING ROAD, 2ND POLE NORTH OF #217 IRVING ROAD.



LEGEND

- PROPOSED GATE VALVE
- PROPOSED HYDRANT ASSEMBLY
- PROPOSED MANHOLE
- PROPOSED STORM CATCH BASIN
- PROPOSED WATER MAIN BENDS
- PROPOSED WATER CURB BOX STOP
- PROPOSED REDUCER
- PROPOSED STORM SEWER
- PROPOSED SANITARY SEWER
- PROPOSED WATER MAIN
- EXISTING STORM SEWER
- EXISTING SANITARY SEWER
- EXISTING WATER MAIN
- WATER SERVICE FROM MAIN TO CURB BOX

TS# 06 - SOIL BORING LOCATION



WATER MAIN NOTES

- ALL WATER MAIN SHALL BE INSTALLED IN ACCORDANCE WITH CURRENT MDOT AND VILLAGE OF MIDDLEVILLE STANDARDS.
- CONTRACTOR TO FIELD VERIFY HORIZONTAL & VERTICAL LOCATION OF ALL UTILITIES WITHIN WORK LIMITS PRIOR TO THE START OF CONSTRUCTION.
- MAINTAIN A MINIMUM OF 10' HORIZONTAL AND 18" VERTICAL SEPARATION BETWEEN WATER & SEWERS.
- EACH LOT TO BE PROVIDED W/(1) 1" WATER SERVICE, (1) CORP STOP & CURB BOX BETWEEN CURB & SIDEWALK.
- PROPOSED WATER MAIN SHALL HAVE A MINIMUM COVER OF 5'-6", UNLESS OTHERWISE NOTED. ALLOWABLE IN ACCORDANCE WITH WATER MAIN INSULATION DETAIL.
- ALL OUT OF SERVICE WATER MAIN SHALL BE ABANDONED IN PLACE AND FILLED WITH FLOWABLE FILL, PAID FOR AS ABANDON AND FILL UNDERGROUND UTILITIES.
- THERE ARE KNOWN LEAD SERVICES ALONG THE ROAD CORRIDOR. ALL LEAD SERVICES ARE TO BE REPLACED FROM THE MAIN, ALL THE WAY TO THE METER. WATER SERVICE'S WILL BE PAID FOR AS EITHER "WATER SERVICE, COPPER, 1 INCH (MAIN TO CURB BOX)" OR "WATER SERVICE, COPPER, 1 INCH (CURB BOX TO METER)"

THE CONTRACTOR IS CAUTIONED THAT THE LOCATION AND/OR ELEVATION OF EXISTING UTILITIES AS SHOWN ON THESE PLANS IS BASED ON RECORDS OF THE VARIOUS UTILITY COMPANIES, AND WHERE POSSIBLE, MEASUREMENTS TAKEN IN THE FIELD. THE INFORMATION IS NOT RELIED ON TO BE EXACT OR COMPLETE. FOR PROTECTION OF UNDERGROUND UTILITIES, AND IN CONFORMANCE WITH PUBLIC ACT 53, 1974, THE CONTRACTOR SHALL CALL TOLL FREE 1-800-482-7171 A MINIMUM OF THREE FULL WORKING DAYS, EXCLUDING SATURDAYS, SUNDAYS, AND HOLIDAYS, PRIOR TO BEGINNING EACH EXCAVATION IN AREAS WHERE PUBLIC UTILITIES HAVE NOT BEEN PREVIOUSLY LOCATED. ALL "MISS DIG" PARTICIPATING MEMBERS WILL BE THUS ROUTINELY NOTIFIED. THIS DOES NOT RELIEVE THE CONTRACTOR FROM NOTIFYING UTILITY OWNERS WHO MAY NOT BE A PART OF THE "MISS DIG" SYSTEM. IT SHALL BE THE RESPONSIBILITY OF THE CONTRACTOR TO RELOCATE ALL EXISTING UTILITIES WHICH CONFLICT WITH THE PROPOSED IMPROVEMENTS SHOWN ON THE PLANS.

