

# williams&works

engineers | surveyors | planners

February 24, 2025

City of Lowell  
Mike Burns  
City Manager  
301 East Main Street  
Lowell, MI 49331

## **CONTRACT: Monroe Street Traffic Control**

### **ADDENDUM NO. 1**

#### **Notice to All Prospective Bidders:**

This Addendum is issued in accordance with INSTRUCTIONS TO BIDDERS, and is hereby incorporated into the Contract Documents. The CONTRACTOR is reminded to appropriately-acknowledge receipt of this Addendum in the BID FORM. *This Addendum forms a part of the Contract Documents and modifies the original Bidding Documents dated February 20, 2025. This Addendum No. 1 consists of two (1) typed pages and enclosures. The issuance of the Specification Sections, and the issue of Drawings are listed at the end of this document and are attached to this document.*

#### **Modifications to Drawings:**

1. Sheet 6: (Re-issued) Add standard pavement section detail with application rates and HMA types.

Please contact the project manager with any questions or comments on this addendum.

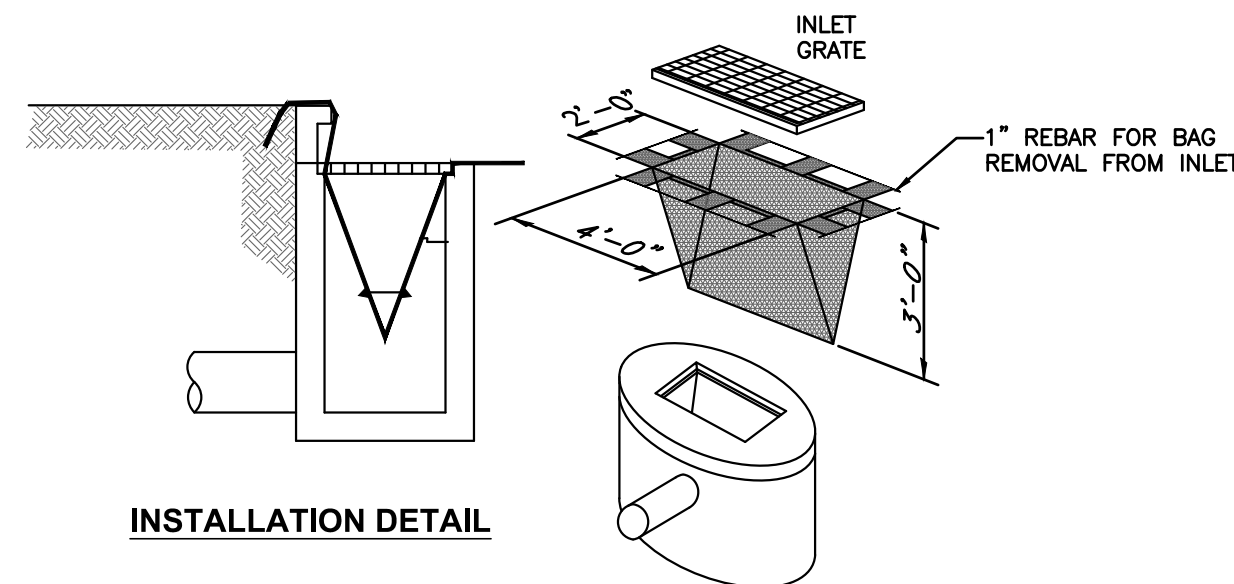
Respectfully submitted,

**Williams & Works**

David Mickevich, P.E.  
Project Manager

Enclosures: Sheet 6 – Construction Details

Cc: All Plan Holders  
Mike Burns, City of Lowell  
Rich Labombard, City of Lowell  
Katie Mendez, EIT, Williams & Works  
File



INSTALLATION DETAIL

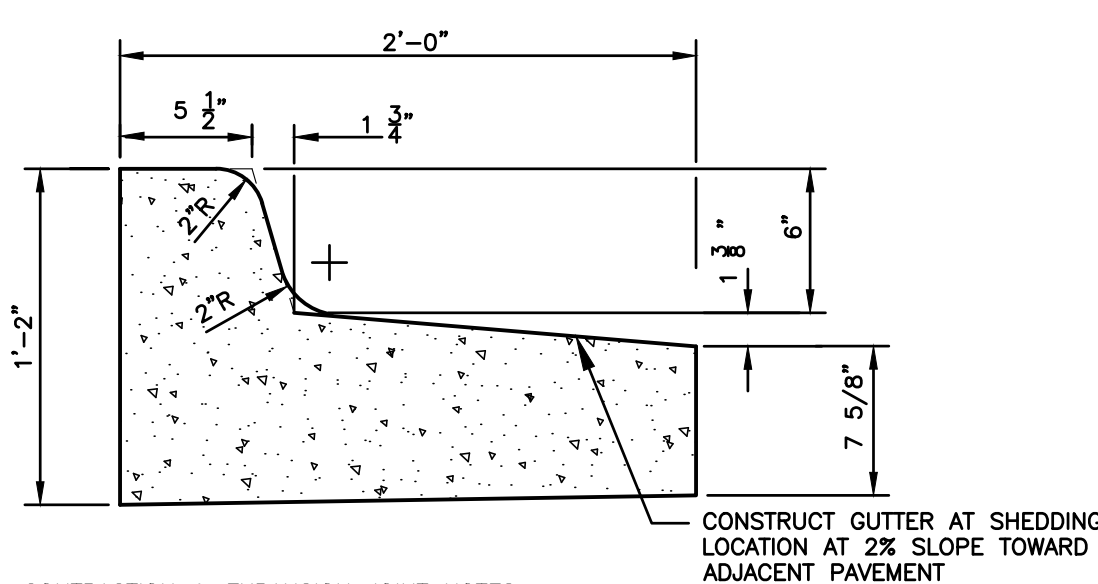
ISOMETRIC VIEW

**NOTES**

1. APPLIES FOR ALL EXISTING AND PROPOSED CATCH BASINS WITHIN WORK LIMITS, OR DIRECTLY DOWNSTREAM FROM PROJECT.
2. INSTALL PER MANUFACTURER'S INSTRUCTIONS.

**S58**

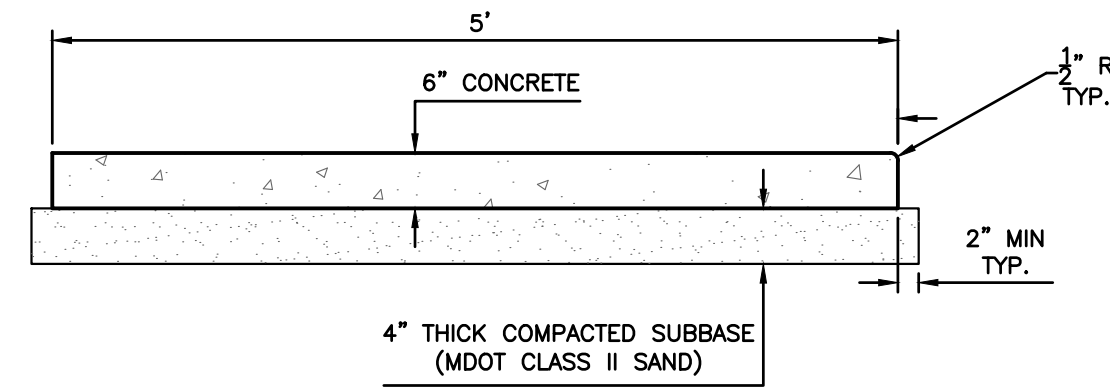
**INLET PROTECTION - FABRIC DROP**



- CONTRACTION & EXPANSION JOINT NOTES:**
1. PLACE 1" FIBER JOINT FILLER AT 400' MAXIMUM INTERVALS
  2. PLACE 1" FIBER JOINT FILLER AT SPRING POINTS OF CURB RETURNS (& INTERSECTING STREETS)
  3. PLACE 1" FIBER JOINT FILLER IN ADJACENT CONTRACTION JOINTS EACH SIDE OF CATCH BASINS.
  4. PLACE CONTRACTION JOINTS AT 40' MAXIMUM INTERVALS (NO SAW JOINTS ALLOWED)

**MDOT MODIFIED F4 CURB & GUTTER**

NOT TO SCALE

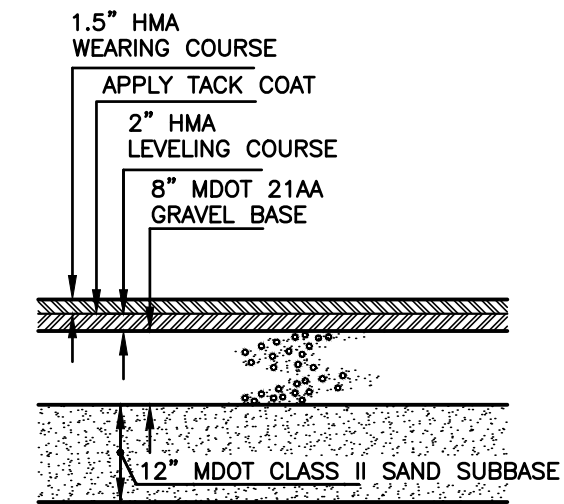


**STANDARD 6 INCH SIDEWALK**

NOT TO SCALE

**MATERIAL TYPES:**

- HMA WEARING COURSE MDOT HMA 5EL (165#/SYD)
- HMA LEVELING COURSE MDOT HMA 3EL (220#/SYD)
- ALL MATERIAL DESIGNATIONS REFER TO M.D.O.T. STANDARD SPECIFICATIONS FOR CONSTRUCTION.

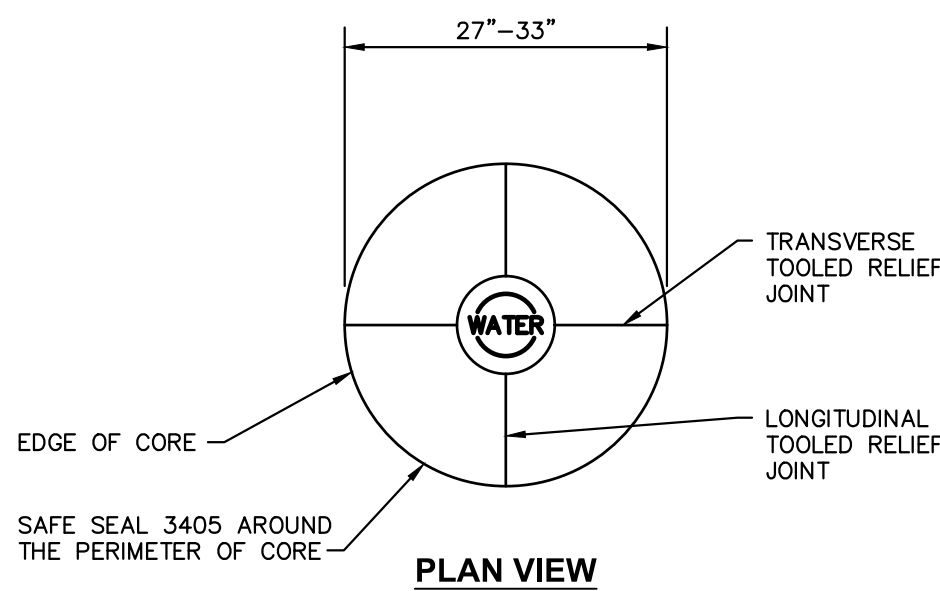


AGGREGATE BASE AND SAND SUBBASE TO BE USED ONLY IN AREAS OF DISTURBANCE.

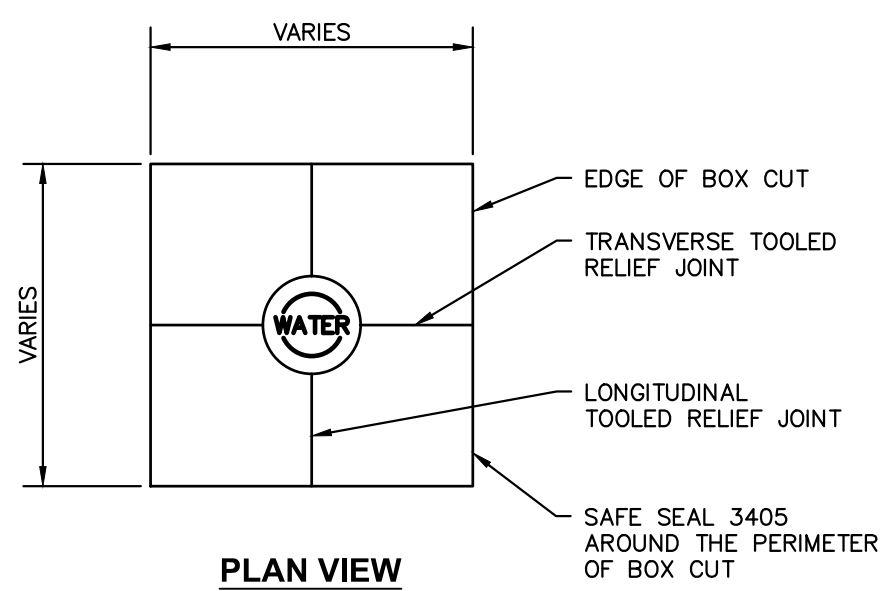
**STANDARD PAVEMENT SECTION**

NOT TO SCALE

1



PLAN VIEW

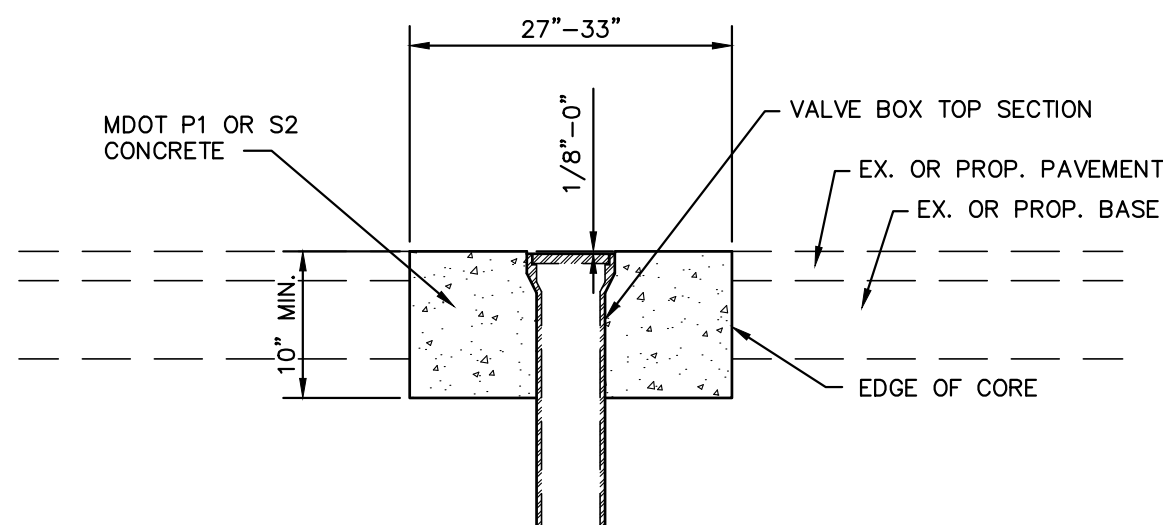


PLAN VIEW

(BOX CUT ONLY AS APPROVED BY THE ENGINEER)

**NOTES:**

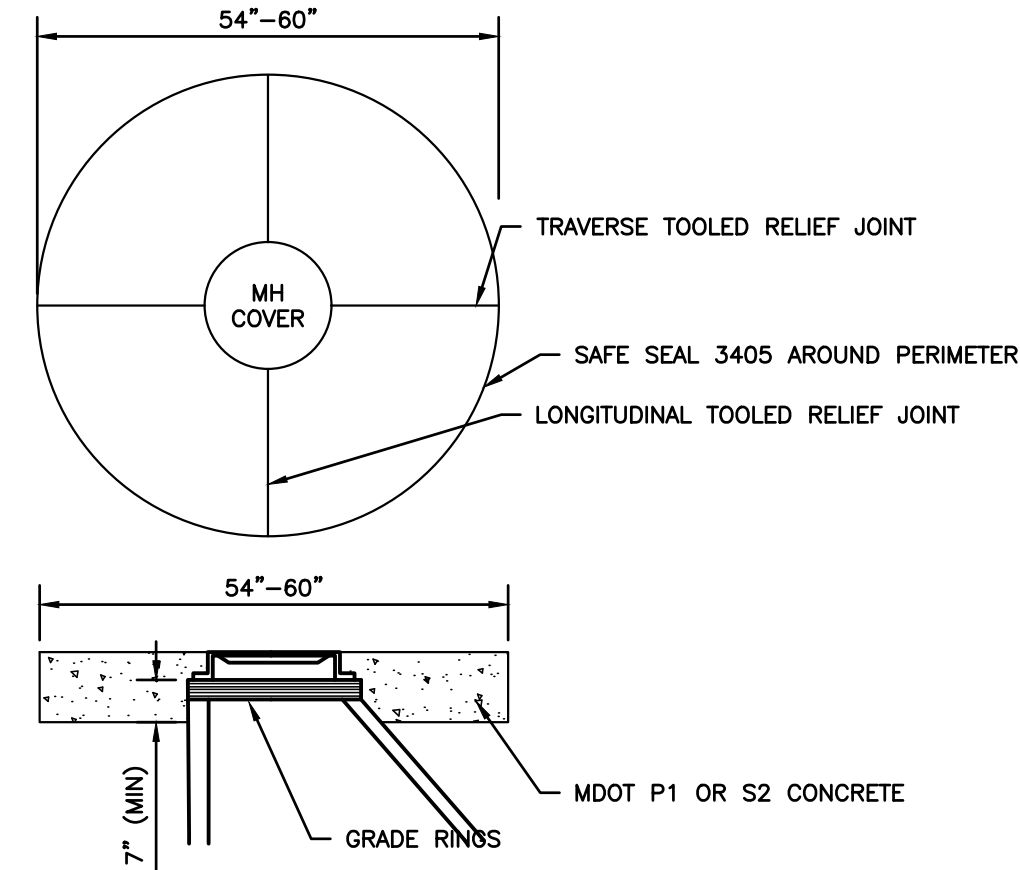
1. THE CONTRACTOR SHALL PAVE ALL LIFTS OF HMA (BASE, LEVELING, AND TOP) BEFORE RAISING THE CASTINGS.
2. ALL STRUCTURES SHALL BE WITNESSED AND LOGGED UTILIZING GPS PRIOR TO REMOVING EXISTING CASTINGS.
3. THE CONTRACTOR SHALL UTILIZE A 27" TO 33" DIA. CIRCULAR CORE TO CUT PAVEMENT AROUND THE VALVE BOX.
4. BOX CUTS MAY BE PERMITTED IN SPECIAL CIRCUMSTANCE, AS APPROVED BY THE ENGINEER. EXCESS SAW CUTS (OVERCUT) SHALL BE SEALED UPON COMPLETION.
5. ONLY SAW CUTTING AND HOLE CUTS SHALL BE ALLOWED. JACKHAMMERING MAY ONLY BE ALLOWED TO REMOVE PAVEMENT WITHIN THE PRECUT PAVEMENT.
6. CONCRETE SHALL BE VIBRATED IN PLACE. VIBRATOR SHALL BE INSERTED AT 12" INTERVALS AND SHALL NOT BE DRAGGED THROUGH CONCRETE. CARE SHALL BE TAKEN AS TO NOT OVER VIBRATE CONCRETE.
7. THE TOP OF THE CONCRETE SHALL BE BROOM FINISHED FLUSH WITH THE SURROUNDING HMA.
8. CASTINGS SHALL BE PROTECTED FROM CONCRETE SPLATTER AND SHALL ALSO BE CLEANED UPON COMPLETION.
9. NO HIGH EARLY CONCRETE MIX SHALL BE ALLOWED.
10. APPLY CURE IMMEDIATELY UPON COMPLETION.
11. THE CONTRACTOR SHALL CLEAN THE AREA OUTSIDE THE HOLE CUT TO ELIMINATE CONCRETE SPLATTER ON THE PAVEMENT.
12. THE CONTRACTOR SHALL PROTECT THE CONCRETE AROUND THE CASTING FROM TRAFFIC AND EQUIPMENT FOR A MINIMUM OF 72 HOURS.
13. THE CONTRACTOR SHALL PLACE HOT-POURED JOINT SEALANT AROUND THE PERIMETER OF CORE/BOX CUT IN ACCORDANCE WITH SECTION 914 OF THE 2020 MDOT STANDARD SPECIFICATIONS FOR CONSTRUCTION.



PROFILE VIEW

**ADJUSTMENT OF VALVE AND BOX**

NOT TO SCALE



**NOTES:**

1. MANHOLE CONCRETE COLLAR DETAIL IS APPLICABLE FOR ALL MANHOLES WITHIN HMA PAVED AREAS.
2. CONCRETE SHALL BE VIBRATED IN PLACE. VIBRATOR SHALL BE INSERTED AT 12" INTERVALS AND SHALL NOT BE DRAGGED THROUGH CONCRETE. CARE SHALL BE TAKEN AS TO NOT OVER VIBRATE CONCRETE.
3. THE TOP OF THE CONCRETE SHALL BE BROOM FINISHED FLUSH WITH THE SURROUNDING HMA.
4. CASTINGS SHALL BE PROTECTED FROM CONCRETE SPLATTER AND SHALL ALSO BE CLEANED UPON COMPLETION.
5. NO HIGH EARLY CONCRETE MIX SHALL BE ALLOWED.
6. APPLY CURE IMMEDIATELY UPON COMPLETION.
7. THE CONTRACTOR SHALL CLEAN THE AREA OUTSIDE THE COLLAR TO ELIMINATE CONCRETE SPLATTER ON THE PAVEMENT.
8. THE CONTRACTOR SHALL PROTECT THE CONCRETE AROUND THE CASTING FROM TRAFFIC AND EQUIPMENT FOR A MINIMUM OF 72 HOURS.
9. THE CONTRACTOR SHALL PLACE HOT-POURED JOINT SEALANT AROUND THE PERIMETER OF COLLAR IN ACCORDANCE WITH SECTION 914 OF THE 2012 MDOT STANDARD SPECIFICATIONS FOR CONSTRUCTION.

**MANHOLE CONCRETE COLLAR**

NO.	ISSUED FOR	DATE
1.	WORKING DRAFT	12/14/23
2.	OWNER REVIEW	5/22/24
3.	CONTRACTOR BID	02/20/25
4.	ADDENDUM NO. 1	02/24/25

**CITY OF LOWELL**  
KENT COUNTY, MICHIGAN  
**MONROE STREET TRAFFIC CONTROL**  
**CONSTRUCTION DETAILS**

DESIGNED BY	DATE	DRAWN BY	DATE	CHECKED BY	DATE
K. MENDEZ	02/20/25	K. MENDEZ	02/20/25	D. MCKEVICH	2/20/25

PROJECT: 223175  
FILE: PLT-DETAILS