



June 1, 2023

City of Belding
Jon Stoppels
City Manager
120 S. Pleasant Street
Belding, MI 48809

CONTRACT: LIGHTING BEND PRESERVE IMPROVEMENT PROJECT

ADDENDUM NO. 1

Notice to All Prospective Bidders:

This Addendum is issued in accordance with INSTRUCTIONS TO BIDDERS, and is hereby incorporated into the Contract Documents. The CONTRACTOR is reminded to appropriately-acknowledge receipt of this Addendum in the BID FORM. *This Addendum forms a part of the Contract Documents and modifies the original Bidding Documents dated May 12, 2023. This Addendum No. 1 consists of two (2) typed pages. The issuance of the Specification Sections, and the issue of Drawings are listed at the end of this document and are attached to this document.*

Modifications to Specifications:

1. Section 00 10 00 Bid Solicitation re-issued

- Replace the following:

Sealed proposals will be received by City of Belding at the City Hall; located at 120 Pleasant St, Belding, MI 48809, ATTN: City Clerk, until 11 a.m. local time, Monday, June 5th, 2023, at which time they will be publicly opened and read aloud.

- With the following:

Sealed proposals will be received by City of Belding at the City Hall; located at 120 Pleasant St, Belding, MI 48809, ATTN: City Clerk, until 11 a.m. local time, Thursday, June 8th, 2023, at which time they will be publicly opened and read aloud.

2. Section 13 34 00 Fabricated Engineered Structures issued

City of Belding Lightning Bend Improvement Project
Addendum No. 1
June 1, 2023
Page 2 of 2

Respectfully submitted,

Williams & Works

Brandon Mieras, PE
Project Manager

Enclosures: Section 00 10 00 Bid Solicitation
Section 13 34 00 Fabricated Engineered Structures

Cc: All Plan Holders
Jon Stoppels – City Manager
David Mickevich, EIT – Williams & Works
File

ADVERTISEMENT
FOR
THE CITY OF BELDING
LIGHTNING BEND PRESERVE IMPROVEMENT PROJECT

The City of Belding is soliciting sealed proposals for the Lightning Bend Preserve Improvement Project. The work includes upgrading and expanding their six-foot trail to an eight-foot crushed asphalt trail. Also, a new prefabricated restroom, new park signs, a parking lot to the west end of the trail, a trail lookout overlooking the Grand River, and new and improved concrete tee boxes with new signs for their disc golf course.

Sealed proposals will be received by City of Belding at the City Hall; located at 120 Pleasant St, Belding, MI 48809, ATTN: City Clerk, until 11 a.m. local time, Thursday, June 8th, 2023, at which time they will be publicly opened and read aloud.

In order for your bid to be recognized and opened, your company must be registered as a Planholder of Record for this project by completing the registration form contained on the project website.

The registration form and PDF versions of the Contract Documents may be obtained only at:

<http://williams-works.com/#bids>

Contact Williams & Works at 616-988-3507 if you have trouble accessing the Contract Documents or using the online registration form.

Bids must be accompanied by a certified check or bid bond by a recognized surety in the amount of five percent (5%) of the bid amount. After the time of opening, no bid may be withdrawn for a period of sixty (60) days.

The City of Belding reserves the right to accept any bid, reject any or all bids, to waive informalities and make the award in any manner deemed in the best interest of The City of Belding.

City of Belding
BY ORDER OF:

Jon Stoppels
City Manager

PART 1 – GENERAL

1.01 DESCRIPTION:

- A. This section includes the work required for the fabricated engineered bathroom.

1.02 SUBMITTALS:

- A. Submit the following in accordance with SECTION 01 33 00 – SUBMITTAL PROCEDURES:
 - 1. Shop drawings for the prefabricated bathrooms

PART 2 – PRODUCTS

2.01 FABRICATED ENGINEERED BATHROOM:

- A. Specified Products:
 - 1. Quality Precast, Easi-Set Buildings, Carson Wet Restroom
 - 2. Greenflush Restrooms, Double Cabin, Durango II
 - 3. Engineer Approved Equal

PART 3 – EXECUTION

3.01 INSTALLATION:

- A. Install prefabricated restroom in accordance with the manufacture's specifications.
- B. See sample manufactures specifications and shop drawings at the end of section for representations that are not intended for construction.

FABRICATED PRE-ENGINEERED PRECAST CONCRETE STRUCTURES

CARSON FLUSH TOILET W/CHASE GABLED STYLE ROOF

SECTION 1 – GENERAL

1.1 SUMMARY

Contractor shall furnish a precast concrete transportable restroom. Building to be delivered and placed on owner-prepared crushed stone foundation in accordance with manufacturer's recommendations. Precast building to be EASI-SET® brand Restroom Model Carson Flush Toilet w/Chase Gabled Style Roof (herein stated as Carson) as manufactured by a *licensed producer of Easi-Set Buildings*. Manufacturer to provide building with all necessary openings as specified by contractor in conformance with manufacturer's structural requirements.

1.2 REFERENCES

- A. ACI-318-11: Building Code Requirements for Structural Concrete and Commentary
- B. ASCE/SEI 7-10: Minimum Design Loads for Buildings and Other Structures
- C. IBC 2012: International Building Code
- D. PCI Design Handbook, 7th Edition
- E. Concrete Reinforcing Institute, Manual of Standard Practice
- F. UL-752 (Test Method level 5) for bullet resistance certified by a military approved laboratory.
- G. 2010 ADA Standards for Accessible Design
- H. International Plumbing Code (IPC) and National Electrical Code (NEC)

1.3 SYSTEM DESCRIPTION

DESIGN REQUIREMENTS

A. Building Dimensions:

Exterior: 10'-8" x 17'-6" x 9'-11" (tallest point)

Interior: 7'-2" x 17'-0" x height (varies)

Design case to be selected to correspond to the design criteria indicated in the aforementioned codes for the geographical location of the project or as specified.

CASE 1: Typical

B. Design Loads:

1. Seismic Design Category 'C', Risk Design Category II
2. Roof Live Load (Snow) – 30 PSF
3. Floor Live Load – 100 PSF

SAMPLE

4. Wind Loading* – 115 MPH

*Design loads relate to precast components only, not accessories (i.e. doors, windows, vents, etc.)

- C. Roof: Gabled style roof. Roof panels shall overhang on all sides to prevent water intrusion. The pitch of the roof shall be 3/12. The roof standard finish is a simulated cedar shake. Other finishes are available.
- D. Roof panels, floor, and wall panels must each be produced as single component monolithic panels. No floor or vertical wall joints will be allowed, except at perimeter interfaces, corners and partitions. Wall panels shall be set on top of floor panel.
- E. Wall-to-Floor interior surface joints along the perimeter of each restroom and partitions (if precast) must contain the locked-in, easy clean-out radius coving. The 3/8" (recessed) x 2" cove must be continuous around the interior of the restroom and along the sides of any precast partitions. Apply 5,000 PSI (minimum) non-shrink, non-metallic grout to the cove, finishing the grout to form a flush 1" minimum radius.

1.4 SUBMITTALS

- A. Engineering calculations designed and sealed by a professional engineer, licensed to practice in the state where the project is located, shall be submitted for approval.
- B. Manufacturers' product literature shall be provided for all plumbing, electrical and miscellaneous installed fixtures demonstrating compliance with these specifications

1.5 QUALITY ASSURANCE

- A. The precast concrete building producer shall be a plant-certified member of either the National Precast Concrete Association (NPCA), The Precast/Prestressed Concrete Institute (PCI), or equal.
- B. The precast concrete building producer shall demonstrate product knowledge and must have a minimum of 5 years experience manufacturing and setting precast concrete.
- C. The manufacturer must be a licensed producer of Easi-Set Buildings.
- D. No alternate building designs to the pre-engineered EASI-SET® building will be allowed unless pre-approved by the owner 10 days prior to the bid date.

SECTION 2 – PRODUCTS

2.1 MATERIALS

- A. Concrete: Steel-reinforced, 5000 PSI minimum 28-day compressive strength, air-entrained (ASTM C260).
- B. Reinforcing Steel: ASTM A615, grade 60 unless otherwise specified.
Welded wire fabric: ASTM 185, Grade 65
- C. Post-tensioning Strand: 41K Polystrand CP50, 1/2" 270 KSI Seven-Wire strand, enclosed within a greased plastic sheath (ASTM A416). Each Roof and floor shall be post-tensioned by a proprietary, second generation design using a single, continuous tendon. Said tendon is placed in the concrete slab to form a perimeter loop starting from one corner of the slab to a point where the cable entered the slab. The tendon then turns 90 degrees and follows the cable member(s) in the periphery to a point midway along the "X" axis of the concrete building panel and then turns 90 degrees along the "Y" axis of

SAMPLE

the concrete building panel. This bisects the concrete building panel and crosses the opposite parallel portion of the cable member and exits from an adjacent side of the concrete building panel. This creates a cable pattern with no less than 2.5 parallel cables in any direction. To ensure a watertight design, no alternate methods shall be substituted for the post-tensioning.

- D. Sealant: All joints between panels shall be caulked along the exterior and interior surface of the joints. Exterior sealant shall be DOW CORNING 790 silicone sealant or equal. Interior sealant shall be SIKAFLEX-1A elastic sealant (paintable) or equal. Exterior caulk reveals to be 3/8" x 3/4" deep so that sides of the joint are parallel for proper caulk adhesion. Back of the joint to be taped with bond breaking tape to ensure adhesion of caulk to parallel sides of joint and not the back.
- E. Panel Connections: All panels shall be securely fastened together utilizing cast-in stainless steel embeds and welding. All welding shall be done in conformance with AWS, Structural Welding Code latest revision. Steel is to be of structural quality, hot-rolled carbon complying with ASTM A304. No floating-in of connection plates shall be allowed.

F. Stain and Paint:

- a. Interior concrete surfaces (toilet rooms)
 - i. Interior floors will be a two component, water based polyamide epoxy floor coating (gray, unless otherwise specified). Approved manufacturers: Sherwin Williams (Floor-Plex 7100), Armorpoxy or equal.
 - ii. Interior walls and ceilings will be a pre-catalyzed water based epoxy. Approved manufacturers: Sherwin Williams or equal.
- b. Exterior concrete surfaces
 - i. Exterior slab top surface (if selected) will be a two component, polyamide epoxy floor coating (gray, unless otherwise specified). Approved manufacturers: Sherwin Williams, Armorpoxy or equal.
 - ii. Exterior walls and roof will be a water-based acrylic, water-repellent penetrating stain. Approved manufacturers: United Coatings (Canyon Tone Stain), Sherwin Williams (H&C Concrete stain) or equal
 - iii. Clear Acrylic anti-graffiti sealer (if selected)

2.2 ACCESSORIES AND FIXTURES

- A. **Doors and Frames:** Shall comply with Steel Door Institute "Recommended Specifications for Standard Steel Doors and Frames" (SDI-100) and as herein specified. All door and frame galvanizing shall be in accordance with ASTM A924 and A653, minimum coating thickness shall be A60.
 - 1. The buildings shall be equipped with 3'-0" x 6'-8" x 1-3/4" (restroom entry doors) & 2'-8" x 6'-8" x 1-3/4" (chase door) thick insulated, 18 gauge, metal doors with 16-gauge frames (to meet wall thickness). Doors shall have a flush top cap. Doors and frames shall be factory bonderized and painted with one coat of rust-inhibitive primer and one finish-coat of enamel paint; color to be BOLT BROWN unless otherwise specified.
 - 2. Doors and frames shall meet SDI standard Level 2, 1 3/4" heavy duty.
Approved manufacturers: Republic, Steelcraft, Ceco, Black Mountain, Pioneer, Curries, Mesker, MPI, Door components or equal
Approved distributor: Integrated Entry Systems

B. Door Hardware:

- 1. **Cylindrical Lock:** Commercial grade, shall meet requirements of ANSI A156.2, series 4000, UL listed and ADA approved. Zinc dichromate chassis with cast solid zinc levers to

SAMPLE

resist corrosion. Furnish locks with 6-pin solid brass keyway. Exterior locks and unlocks by key, interior push button lock, released when lever is turned. Manufacturer shall provide a limited lifetime warranty on this product.

Approved manufacturers: Design Hardware, or equal

2. Hinges: Self-Closing (spring) Hinges. Shall comply with ANSI A156.17 Grade 1 self closing hinges (3 per door). Hinges shall be Stainless Steel Grade 304 (ANSI K81071F) US32D brushed satin finish. Manufacturer shall provide a lifetime limited warranty.

Approved manufacturers: Design Hardware, or equal

3. Door Sweep: Nylon brush door sweep, ANSI/BHMA certified. Sweeps shall have an integral drip edge to repel water from base of door. Sweeps shall be approved for UL 10C positive pressure and suitable for use with fire doors up to three hours.

Approved manufacturers: National Guard Products or equal

4. Drip Cap: Aluminum drip cap with minimum projection of 2 ½" shall be furnished.

Approved Manufacturers: Design Hardware, National Guard Products, or equal

5. Door Stop: ANSI 156.16 approved wall mounted door stop with keeper constructed of a corrosion resistant cast brass material. Finish US26D (626) brushed chrome finish.

Approved manufacturers: Don-Jo, Rockwood, or equal

C. Wall Vent: Wall vents will be extruded aluminum, minimum thickness of .125", 6063-T5 alloy. Vents to be supplied with aluminum mesh insect screen and 204-R1 clear anodized finish. Approved manufactures: Sunvent Industries or equal.

D. Signs: Signs to have braille, characters, and pictograms to meet ADA requirements.

E. Windows: Frames shall be constructed from stainless steel. Window glazing will be ¼" translucent Lexan.

F. Grab Bars: Stainless steel tubing, 18 gauge, type 304 stainless steel, mounted 1-1/2 inches from wall. Approved manufacturers: Bobrick or equal.

G. Toilet Paper Dispenser: Dispenser will be constructed of 3/16" to 1/4" thick 304 stainless steel. Dispenser will be capable of holding three (3) standard rolls of toilet paper. Approved manufacturers: Aslin Industries, Bobrick or equal.

H. Plumbing: All fixtures will meet ASME A112.19.3

1. Waste and vent piping: ABS or PVC plastic
2. Water piping: Copper tubing Type L, hard drawn. A gate or ball valve will be provided at the inlet end of the water line. Size water lines to provide proper flushing action based on a nominal water pressure of 40 psi.
3. A main shut-off valve and drain will be provided with plumbing
4. Toilet and urinal (if provided): ADA compliant, porcelain, wall hung, with siphon or blowout jet action. Provide back spud for concealed flush valve connection, unless otherwise specified.
5. Flush valve: Concealed toilet flush valve with integral vacuum breaker and a non-hold-open pushbutton or handle. Constructed of bronze or brass with water saver flow of 1.6 gallons per flush.
6. Lavatory: ADA compliant, porcelain with backsplash.
7. Lavatory valve will be pneumatically operated pushbutton valve. Valve to be non-hold open type with a vandal resistant pushbutton requiring less than 5 lbs. pressure to activate.
8. Hose bib to be provided in chase area.
9. Floor drain: (Optional)-Floor drains to be provided in each room of the restroom building if selected.

SAMPLE

10. Hammer arrester to be installed on water line

11. Trap primer distribution unit to be installed

- I. **Electrical:** All components UL shall be listed
1. A 100-amp breaker panel will be provided
 2. All electrical wiring will be encased in conduit. All wire to be copper.
 3. Light Fixtures:
 - a. Chase(service area): 4-foot (48") LED fixture, switch controlled
 - b. Toilet rooms: 4-foot (48") LED fixture, motion detector activated
 - c. Exterior: 11-watt minimum LED light, polycarbonate vandal resistant.
 4. Hand dryer: Surface-mounted ADA compliant, universal type motor, with adjustable sensor operation.
 5. One GFCI outlet located next to the lavatory
 6. Two restroom area exhaust fans with 190 CFM speed controllable, occupancy/motion sensor controlled.

2.3 Finishes

- A. **Interior of Building:** Smooth form finish on all interior panel surfaces unless exterior finish is produced using a form liner, then smooth hand-troweled finish.
- B. **Exterior of Building (standard):** Barn board finish on all exterior wall surfaces with a simulated cedar shake roof finish.
- C. **Exterior of Building (Option #1):** Architectural precast concrete brick finish: Finish must be imprinted in top face of panel while in form using an open grid impression tool similar to EASI-BRICK®. Finished brick size shall be 2 3/8" x 7 5/8" with vertical steel float or light broom finish. Joints between each brick must be 3/8" wide x 3/8" deep. Back of joint shall be concave to simulate a hand-tooled joint.
- D. **Exterior of Building (Option #2):** Additional finishes for walls and roof are available and will vary by local producer.

SECTION 3 – EXECUTION

3.1 SITE PREPARATION (MANUFACTURER'S RECOMMENDATION)

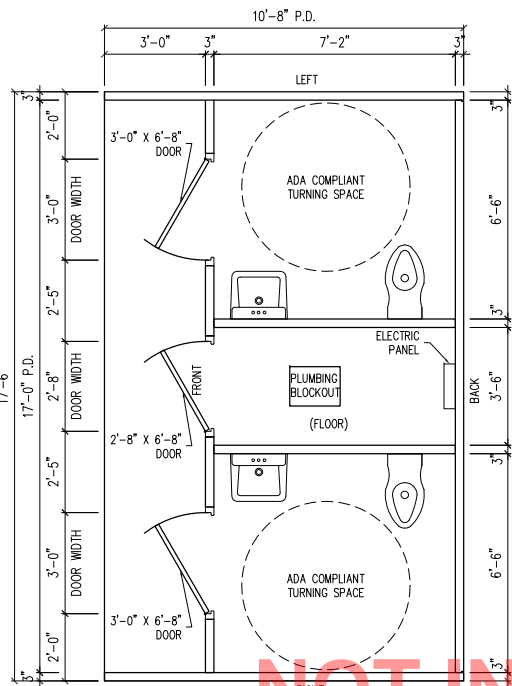
Work under this section relates to placement of the restroom building by the Easi-Set licensed producer on the customer-prepared foundation and site.

Water, electrical, and waste site connections to be located corresponding to the drawings. Connections must allow for easy installation and hookup to building.

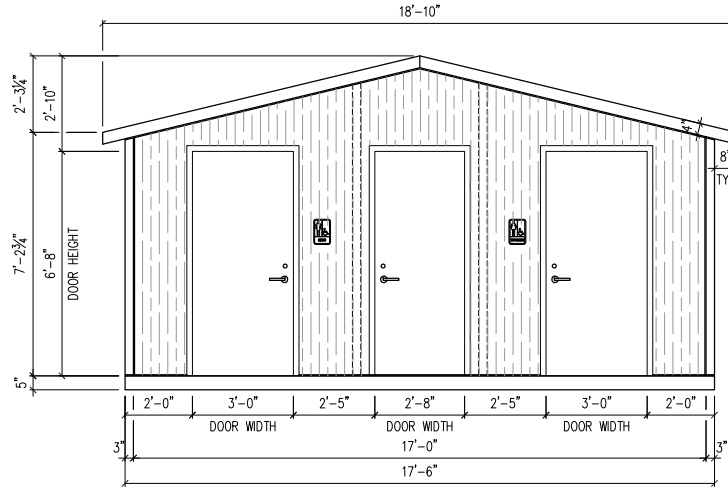
- A. EASI-SET® Restroom building shall bear fully on a crushed stone base that is at least two feet larger than the length and width of building.
- B. Stone shall be a minimum of 4" thick and down to firm subgrade. The vertical soil capacity under stone shall be compacted to have minimum bearing of 1,500 pounds per square foot. Stone shall be 3/8" or smaller and must be screeded level within 1/4" in both directions. Stone shall be placed within a perimeter form having a flat and level top edge for screeding. Forming material shall remain around stone until after the building is set.
- C. The crushed stone base shall be kept within the confines of the soil or perimeter form. Do not allow the base to become unconfined so that it may wash, erode, or otherwise be undermined.
- D. Provide positive drainage around the building.

3.2 SITE ACCESS

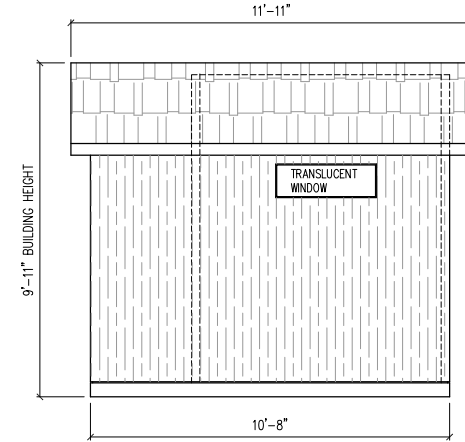
Contractor must provide a level, unobstructed area large enough for a crane and a tractor-trailer to park adjacent to the pad. Crane must be able to place outriggers within 5'-0" of edge of pad; truck and crane must be able to get side-by-side under their own power. No overhead lines may be within 75' radius of center of pad. Firm roadbed with turns that allow 65' lowbed tractor-trailer must be provided directly to site. No building shall be placed closer than 2'-0" to an existing structure unless specifically permitted.



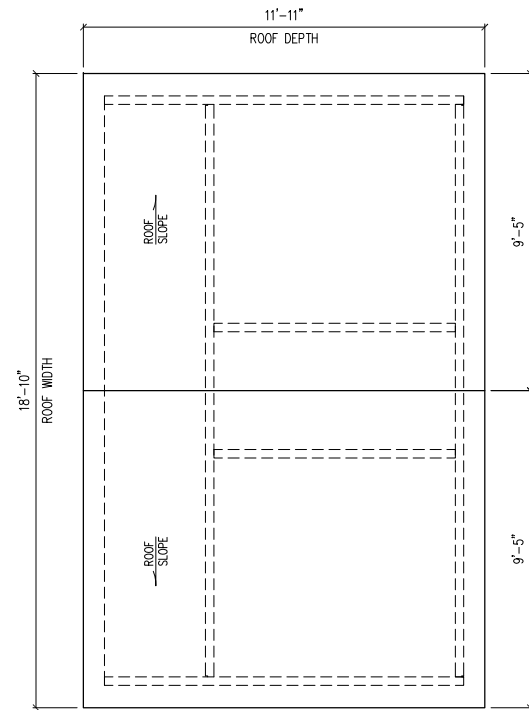
FLOOR PLAN



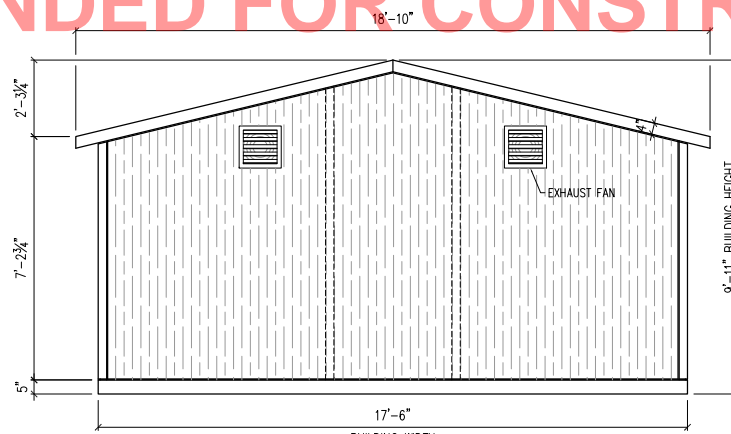
FRONT ELEVATION



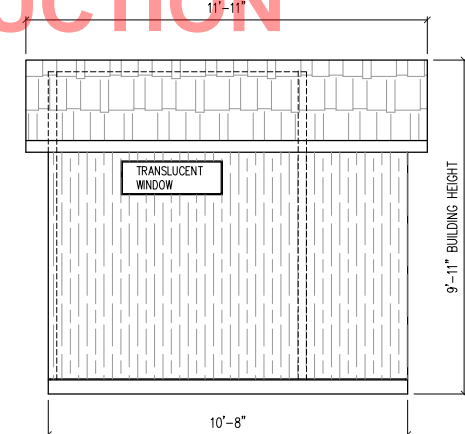
RIGHT ELEVATION



ROOF PLAN



BACK ELEVATION



LEFT ELEVATION

NOT INTENDED FOR CONSTRUCTION

NOTE: FINISH OPTIONAL, VARIOUS FINISHES ARE AVAILABLE

- EASI-BRICK
- BARNBOARD
- BROOM
- OTHER: _____

GENERAL NOTES:

1. ALL REQUIRED OPENINGS FOR ELECTRIC, MECHANICAL, LOUVERS, ETC. MUST BE SIZED AND LOCATED BY BUYER ON THIS DRAWING (OPENING SIZES AND LOCATIONS MAY HAVE TO BE ALTERED IF THEY INTERFERE WITH CONNECTIONS OR REINFORCING)
2. ALL VIEWS ARE FROM EXTERIOR
3. A SIGNED COPY MUST BE RETURNED BEFORE BUILDING CAN BE RELEASED FOR PRODUCTION

DATE	DESCRIPTION	INI.	REV
-	-	-	1
-	-	-	2
-	-	-	3
-	-	-	4
-	-	-	5

PROJECT: 10'-8" x 17'-6" x 9'-11"
 EASI-SET CARSON FLUSH
 RESTROOM BUILDING
 CONTRACTOR: CONTRACTOR.

BUILDING LAYOUT

JOB #	_____
DRAWN BY	M.R
CHECK BY	KSS
ISSUE DATE	06.27.14
SHEET	LAYOUT

MESSAGE CENTER	
BUILDING FINISH	_____
BUILDING STAIN	-
DOOR COLOR	-
BUILDING WEIGHT	-
CUSTOMER APPROVAL	
APPROVED BY:	DATE:



Quality Precast, Inc.

7800 Adobe Road

Kalamazoo, MI 49009

(269) 342-0539

www.qualityprecastinc.com

NOT INTENDED FOR CONSTRUCTION

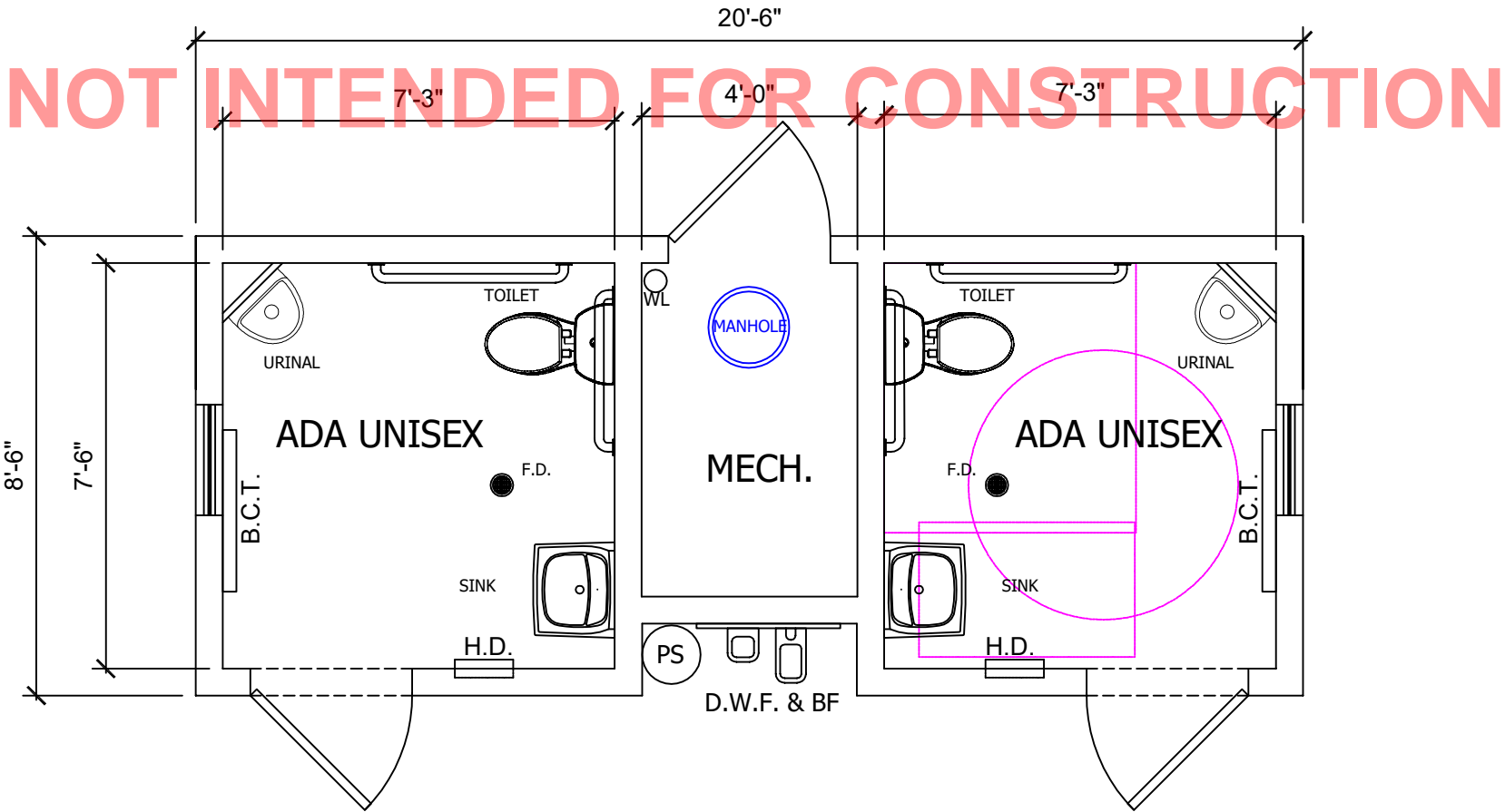
List of Items that are included:

Electric:

- * 100 amp main breaker panel
- * 3 GFCI outlets (1 in each restroom, 1 – in the chase area)
- * 3 LED vapor tight light fixtures (1 in each restroom, 1 in the chase area, all on motion detectors)
- * 2 – exhaust fans
- * 1- outdoor LED wall pack
- * Hand dryer in each restroom

Plumbing:

- * Porcelain toilet in each restroom w/ electronic flush valve
- * Porcelain sink with timed faucet
- * 2 tankless on demand electric hot water heaters
- * 18" x 36" mirror over each sink
- * 3 roll toilet paper holder.



Durango II | Brandywine Park

